



Lake Conroe Habitat Partnership

February 9, 2026



Agenda

- Recap
 - 2024 Full Vegetation Survey
 - 2025 Spring Hydrilla Only
- Vegetation Survey Results
 - Full Vegetation Survey 2025
- 2026 Plan
 - Herbicide
 - Triploid Grass Carp

Recap

- Switched to Aerial Surveys in 2024
 - May 20 – hydrilla only, north end above 1097
 - August 28 – all vegetation, whole lake
- Started looking at # of Triploid Grass Carp/palatable acre of veg.
- Decided on-the-water surveys are better for spring surveys
 - May 2025 (8 days total, 5/9 – 6/10), hydrilla only, north end above 1097



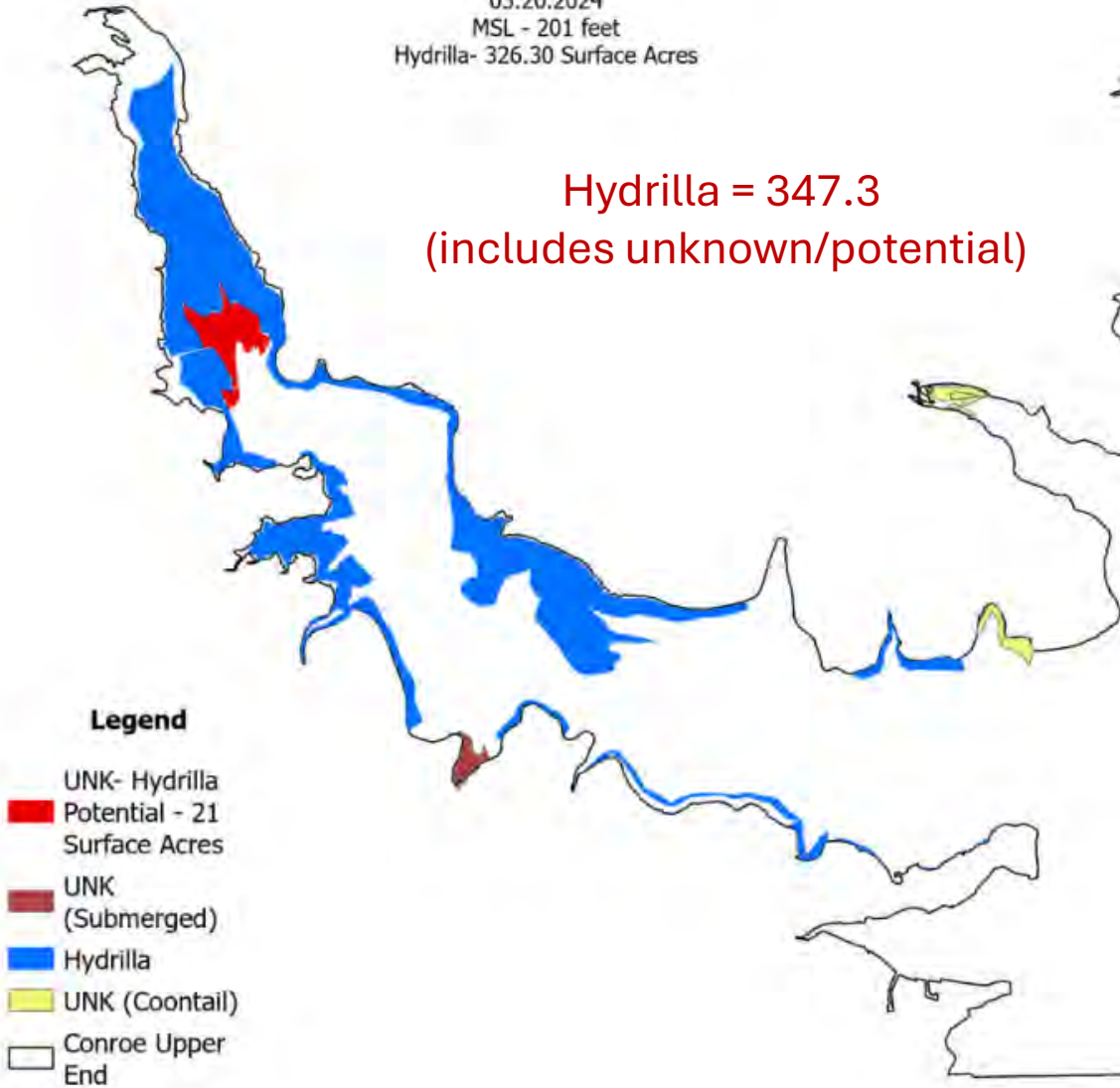
Lake Conroe Hydrilla 2024

Scotts Ridge

Surveyed By
Dylan Kwak and John Findeisen

Survey Dates
05.20.2024
MSL - 201 feet
Hydrilla- 326.30 Surface Acres

Hydrilla = 347.3
(includes unknown/potential)



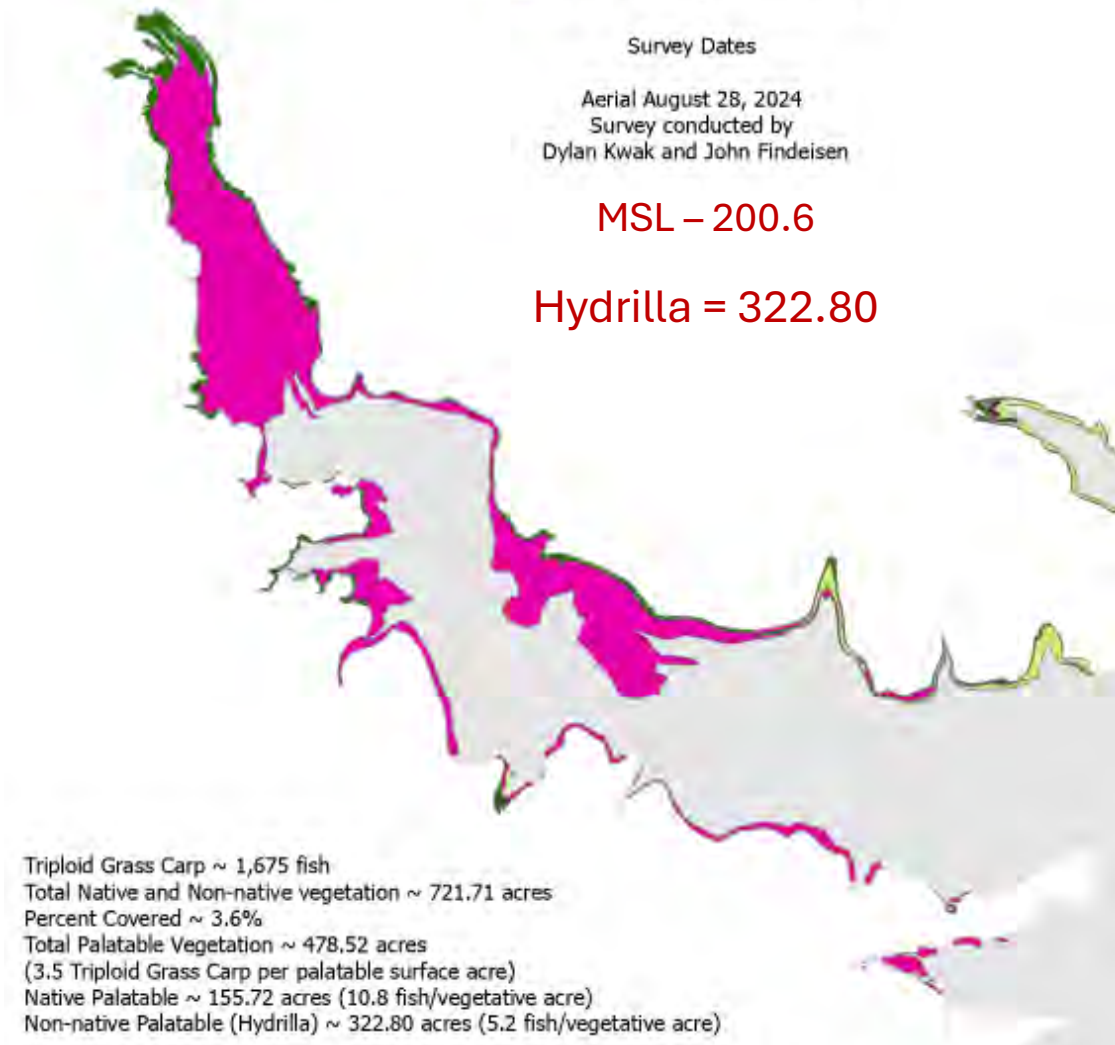
- Legend**
- UNK- Hydrilla Potential - 21 Surface Acres
 - UNK (Submerged)
 - Hydrilla
 - UNK (Coontail)
 - Conroe Upper End



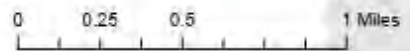
- Legend**
- Lake Conroe - 19,816.67 Acres
 - Hydrilla ~ 322.80 acres
 - Non-native Emergent ~ 0.14 acres
 - Non-native Floating ~ 29.45 Acres
 - Native Emergent ~ 213.18 acres
 - Native Floating ~ 0.41 Acres
 - Native Submerged ~ 155.72 acres

Survey Dates
Aerial August 28, 2024
Survey conducted by
Dylan Kwak and John Findeisen

MSL - 200.6
Hydrilla = 322.80



Triploid Grass Carp ~ 1,675 fish
Total Native and Non-native vegetation ~ 721.71 acres
Percent Covered ~ 3.6%
Total Palatable Vegetation ~ 478.52 acres
(3.5 Triploid Grass Carp per palatable surface acre)
Native Palatable ~ 155.72 acres (10.8 fish/vegetative acre)
Non-native Palatable (Hydrilla) ~ 322.80 acres (5.2 fish/vegetative acre)



Legend

- Lake Conroe - 19,816.67 Acres
- Hydrilla ~ 322.80 acres ←
- Non-native Emergent ~ 0.14 acres
- Non-native Floating ~ 29.45 Acres
- Native Emergent ~ 213.18 acres
- Native Floating ~ 0.41 Acres
- Native Submerged ~ 155.72 acres



Lake Conroe Hydrilla May 2025

Surveyed by Mike Gore, Dawn Dorsett,
Brandon Murray, Rebecca Mangold

05/09, 05/12, 05/13, 05/21,
05/22, 05/23, 05/29, 06/10

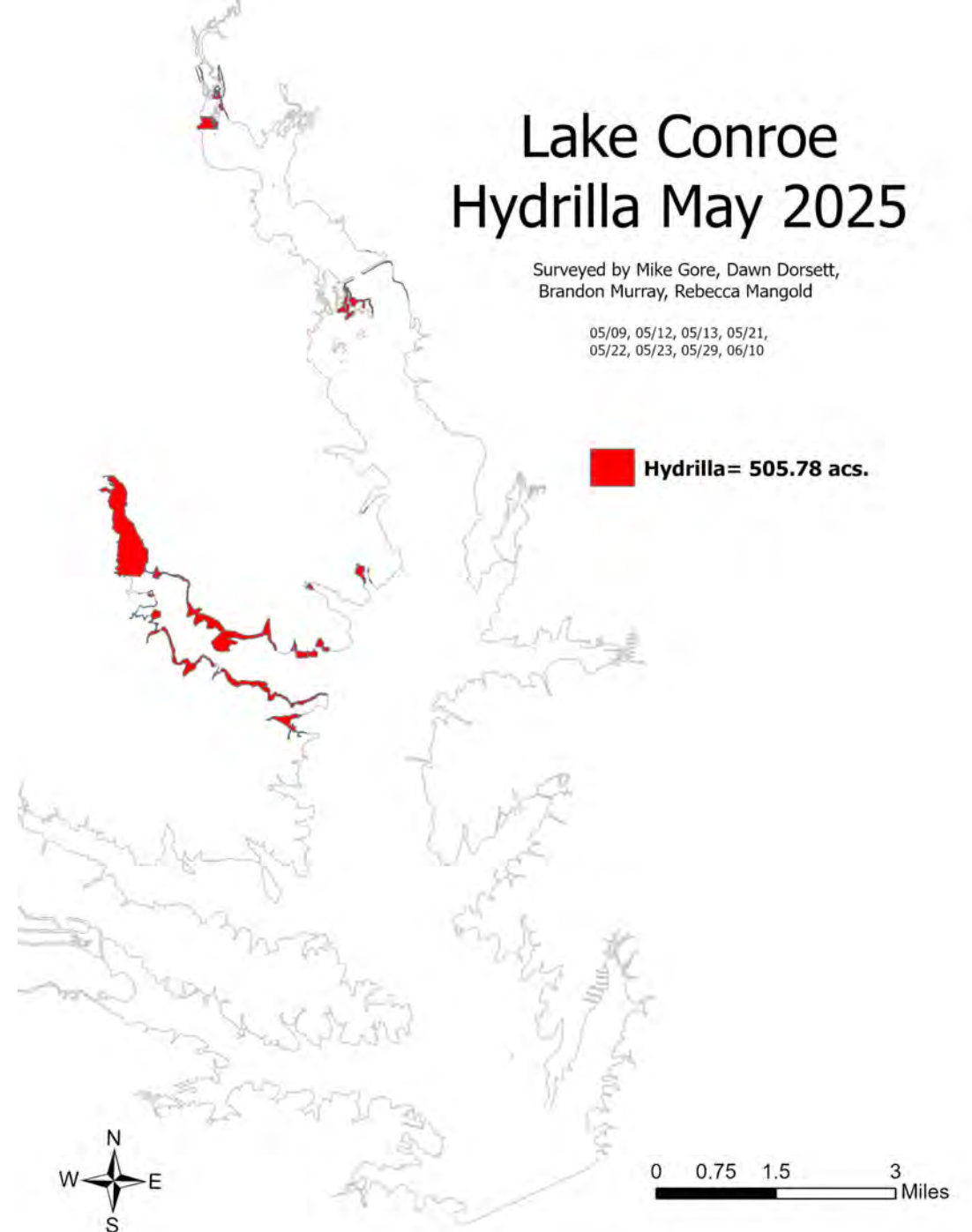
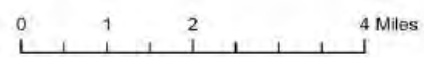
Hydrilla= 505.78 acs.

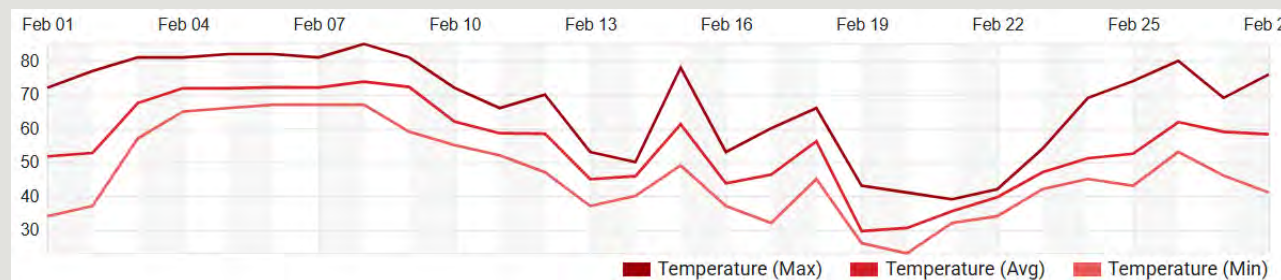
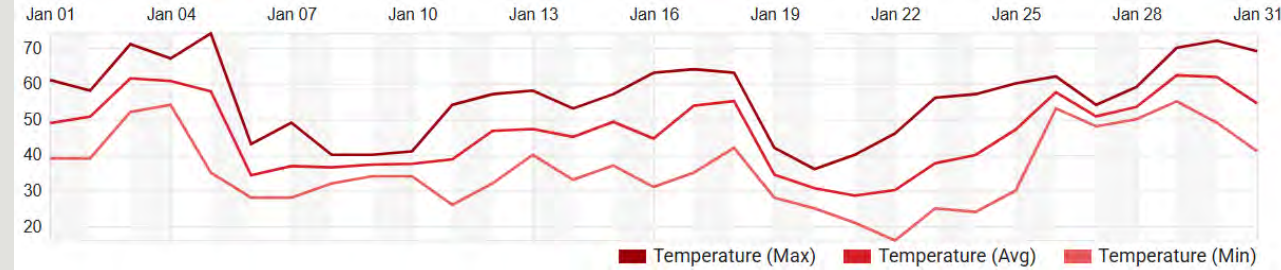
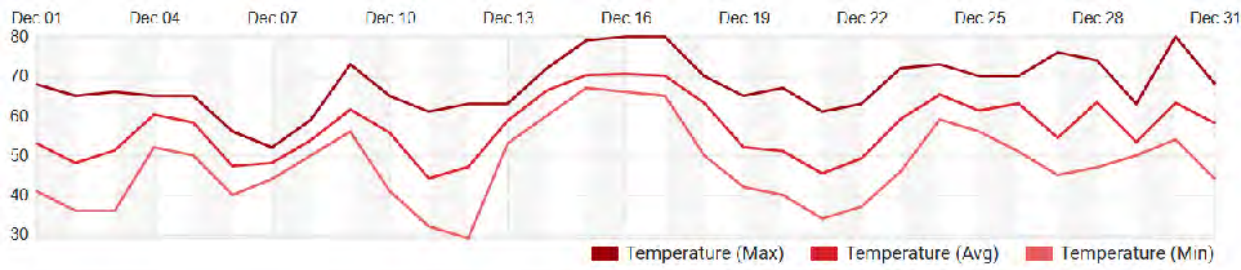
Survey Dates

Aerial August 28, 2024
Survey conducted by
Dylan Kwak and John Findeisen

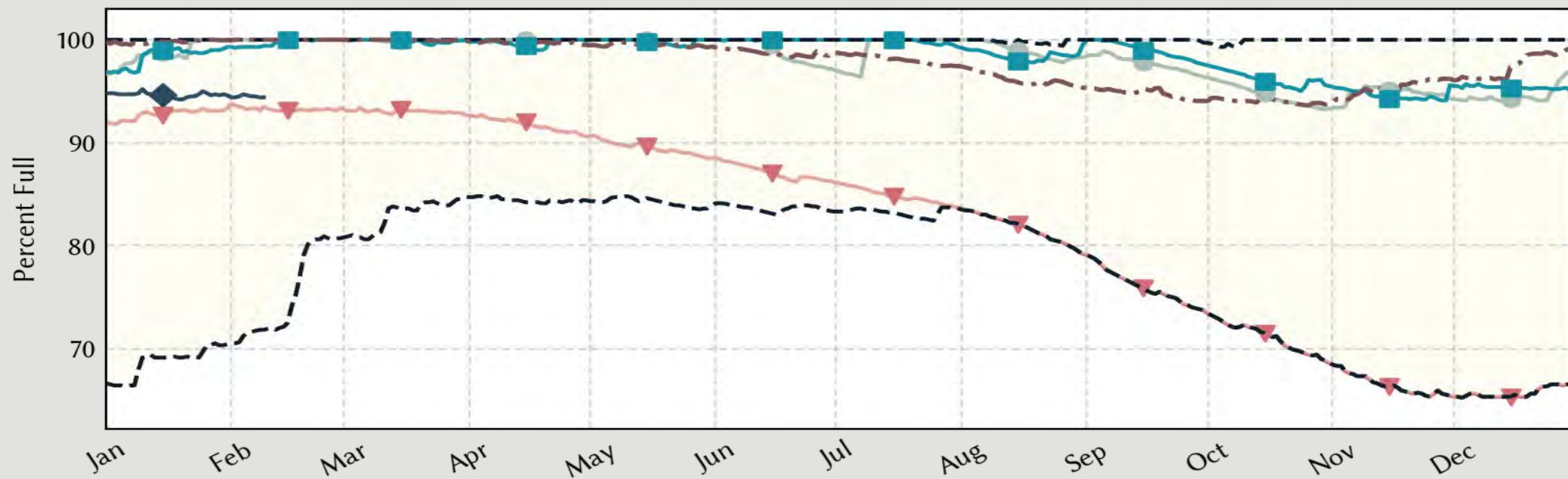
Hydrilla = 322.80
MSL – 200.6

Triploid Grass Carp ~ 1,675 fish
Total Native and Non-native vegetation ~ 721.71 acres
Percent Covered ~ 3.6%
Total Palatable Vegetation ~ 478.52 acres
(3.5 Triploid Grass Carp per palatable surface acre)
Native Palatable ~ 155.72 acres (10.8 fish/vegetative acre)
Non-native Palatable (Hydrilla)~ 322.80 acres (5.2 fish/vegetative acre)






◆ 2026
 ■ 2025
 ● 2024
 ▼ 2011
 - - - Min / Max (1990-2025)
 - . - Median (1990-2025)



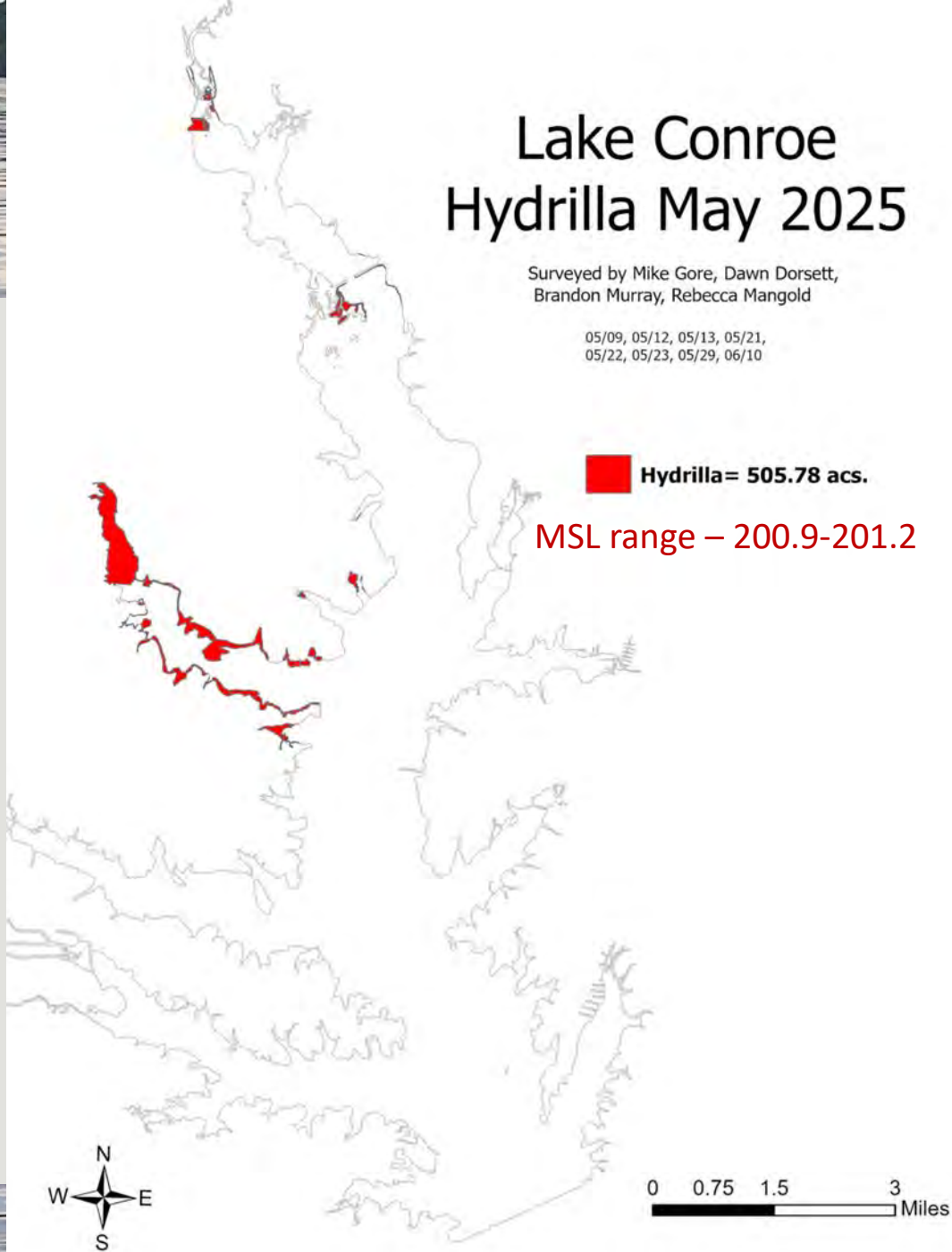
Lake Conroe Hydrilla May 2025

Surveyed by Mike Gore, Dawn Dorsett,
Brandon Murray, Rebecca Mangold

05/09, 05/12, 05/13, 05/21,
05/22, 05/23, 05/29, 06/10

 Hydrilla= 505.78 acs.

MSL range – 200.9-201.2

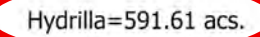


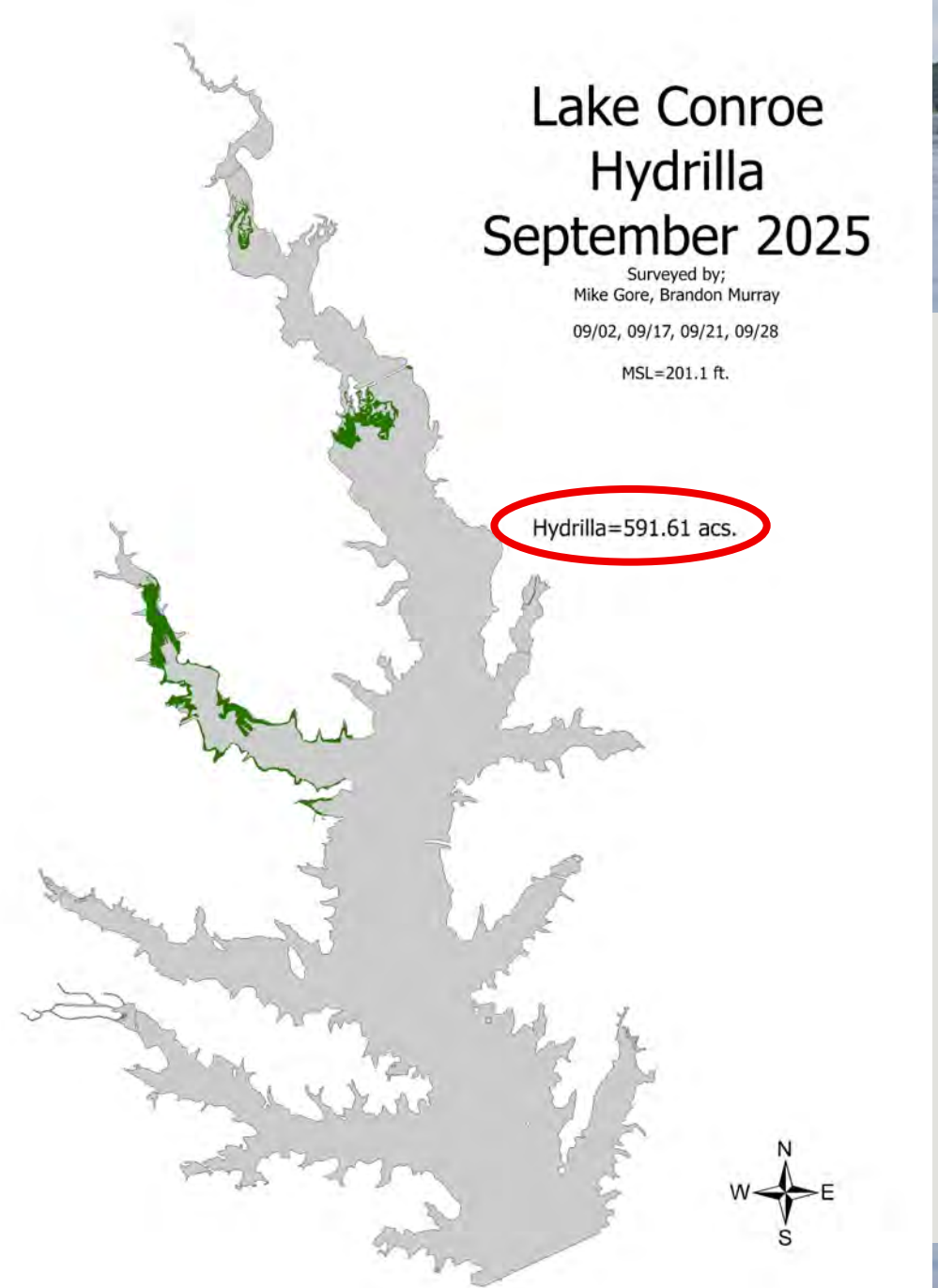
Lake Conroe Hydrilla September 2025

Surveyed by;
Mike Gore, Brandon Murray

09/02, 09/17, 09/21, 09/28

MSL=201.1 ft.

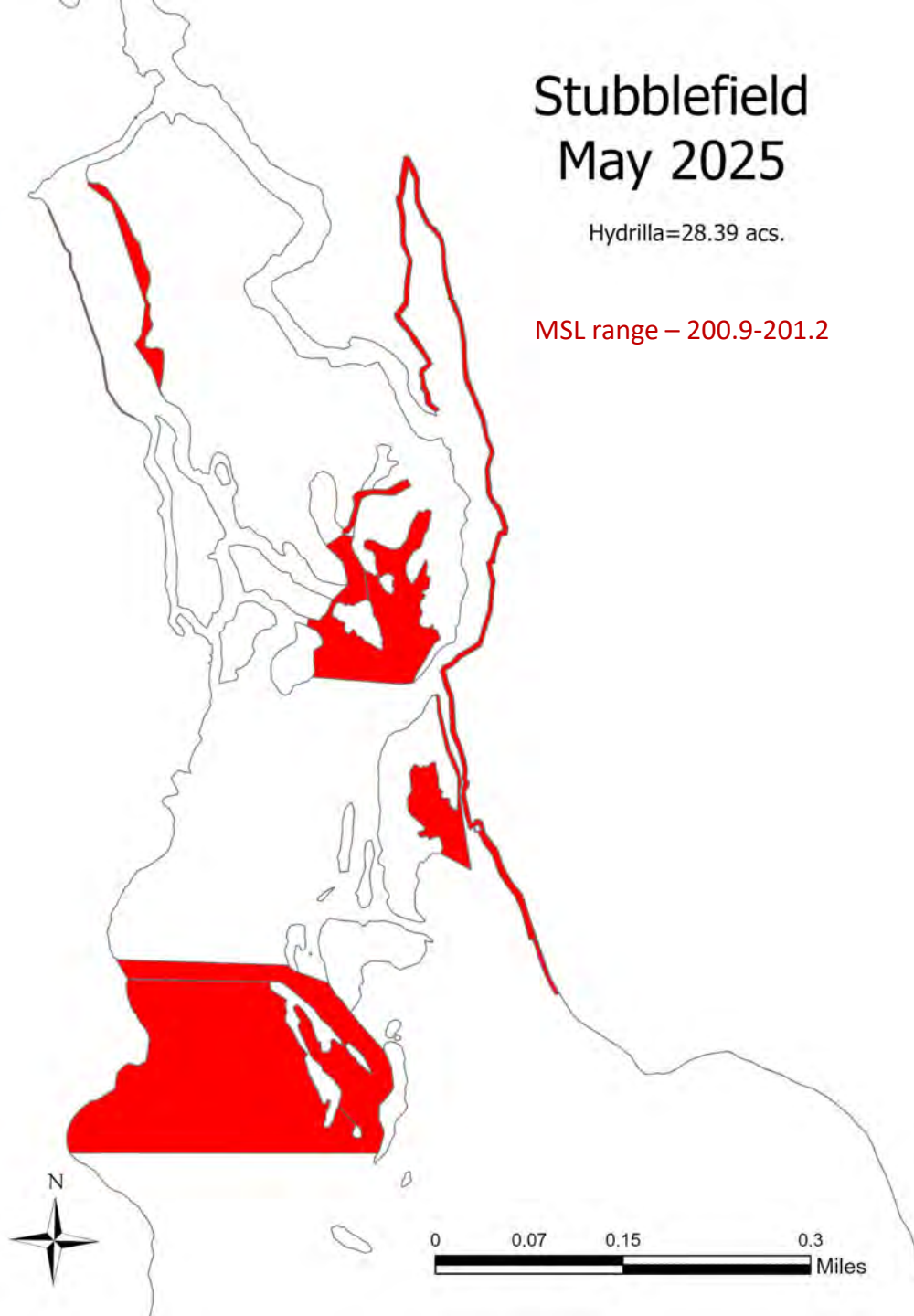
 Hydrilla=591.61 acs.



Stubblefield May 2025

Hydrilla=28.39 acs.

MSL range – 200.9-201.2

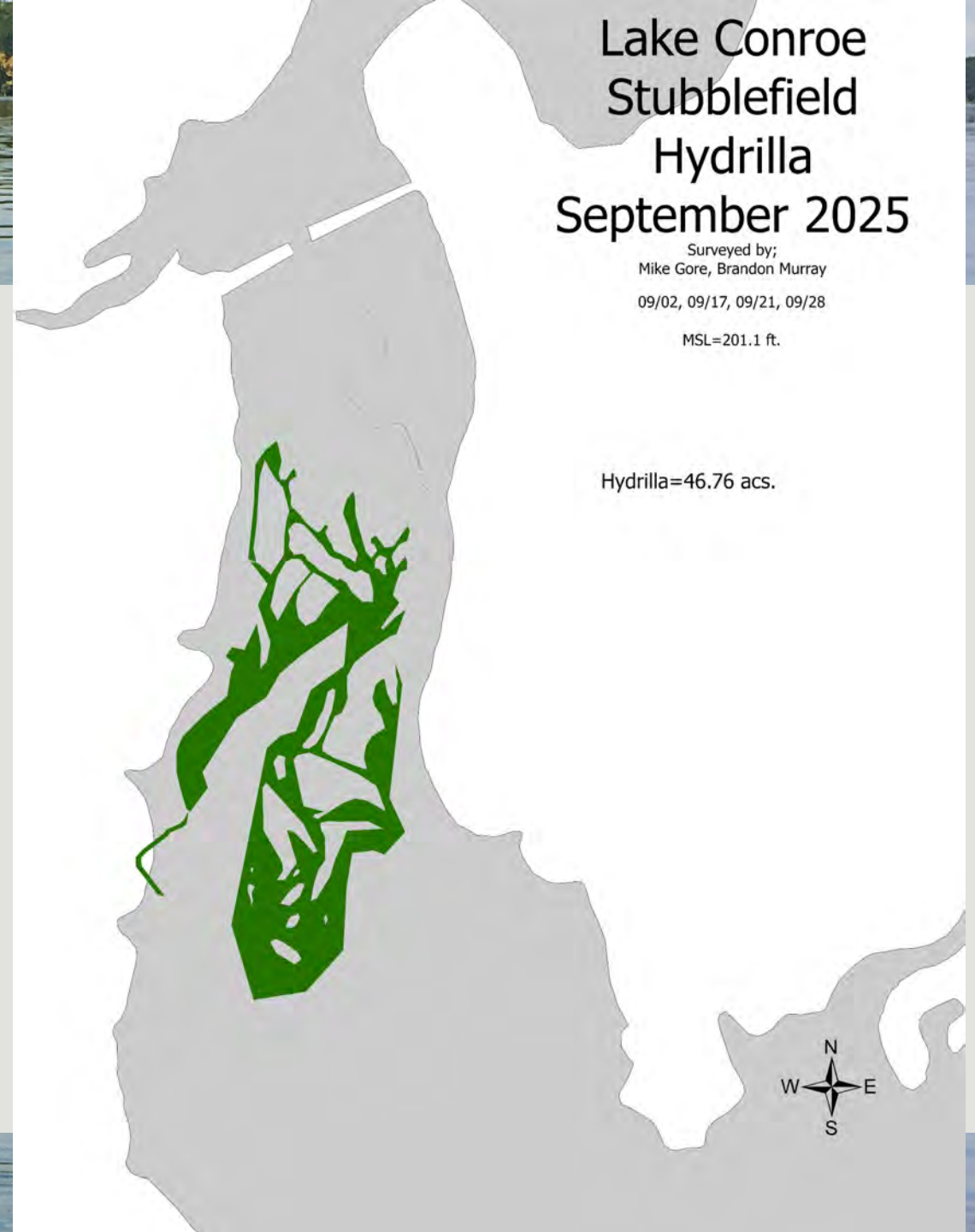


Lake Conroe Stubblefield Hydrilla September 2025

Surveyed by;
Mike Gore, Brandon Murray
09/02, 09/17, 09/21, 09/28

MSL=201.1 ft.

Hydrilla=46.76 acs.

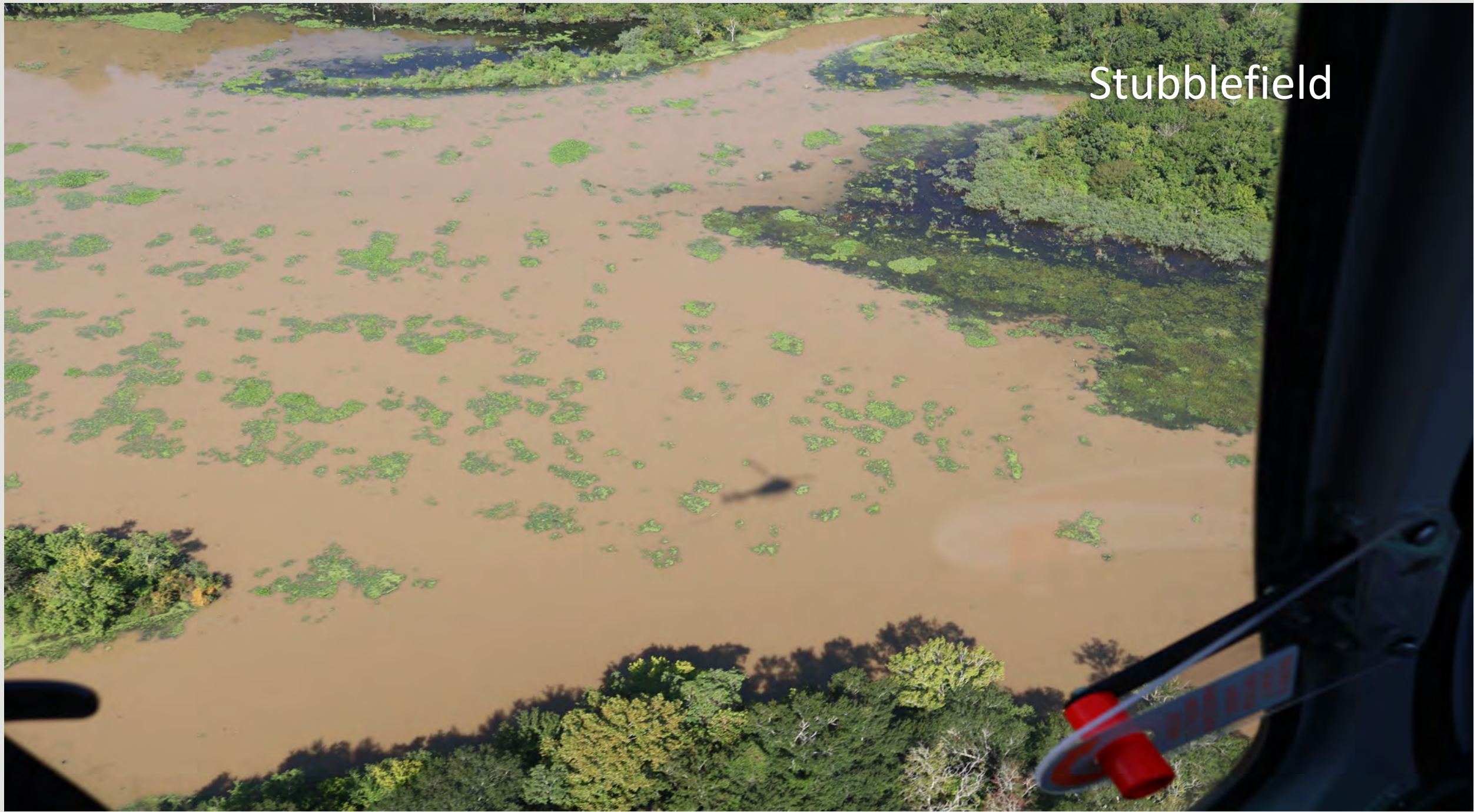


Stubblefield



260M

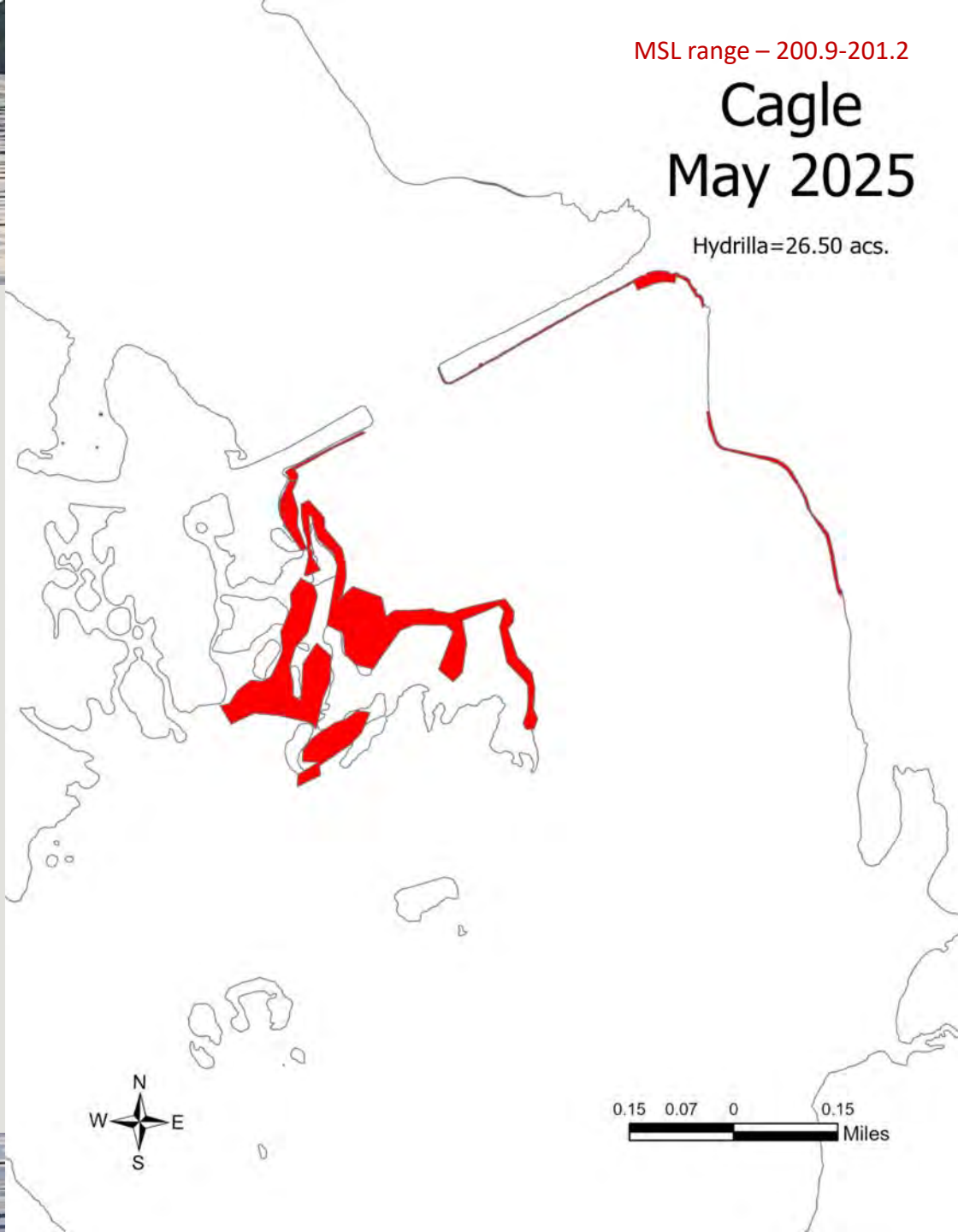
Stubblefield



MSL range – 200.9-201.2

Cagle May 2025

Hydrilla=26.50 acs.

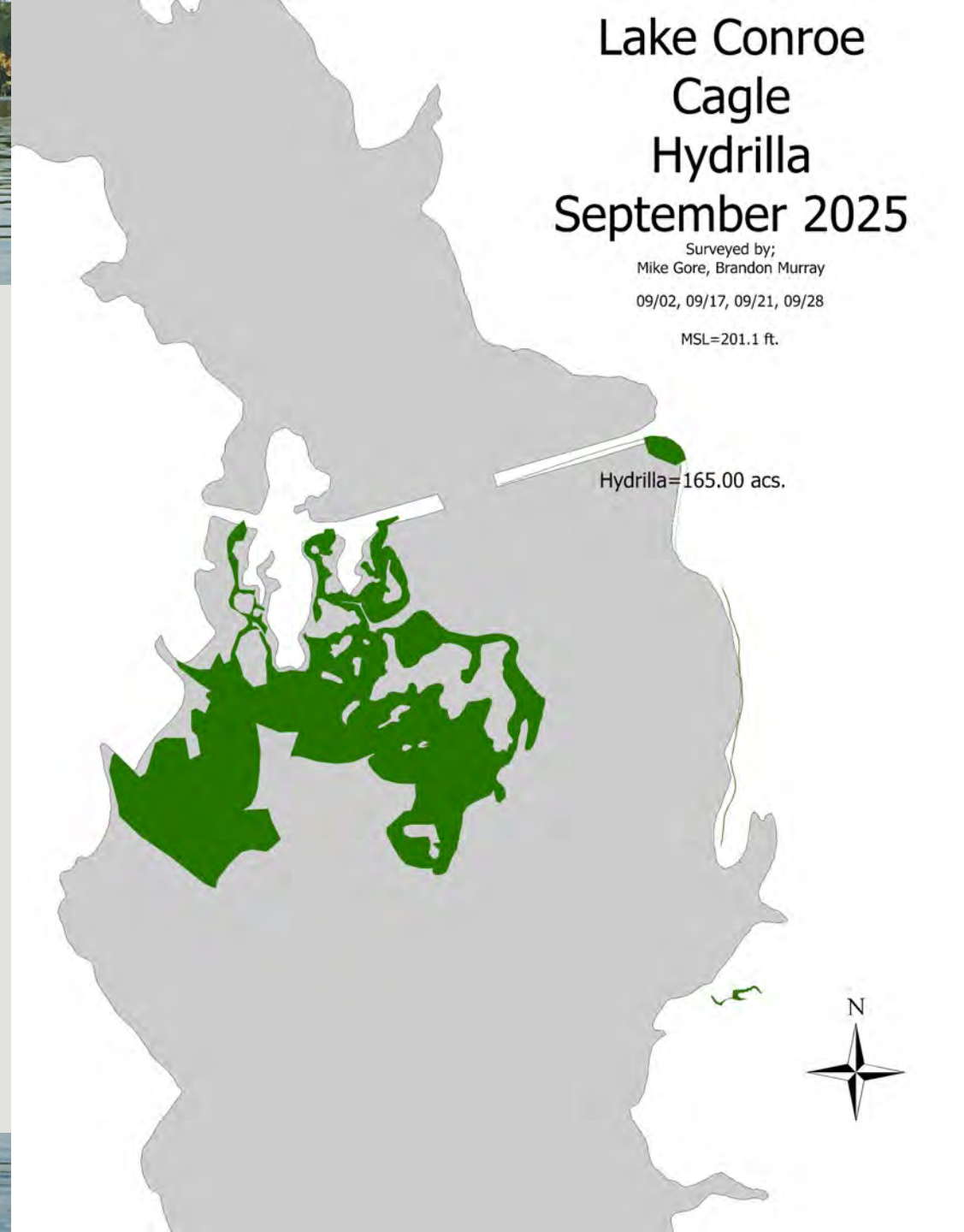


Lake Conroe Cagle Hydrilla September 2025

Surveyed by;
Mike Gore, Brandon Murray
09/02, 09/17, 09/21, 09/28

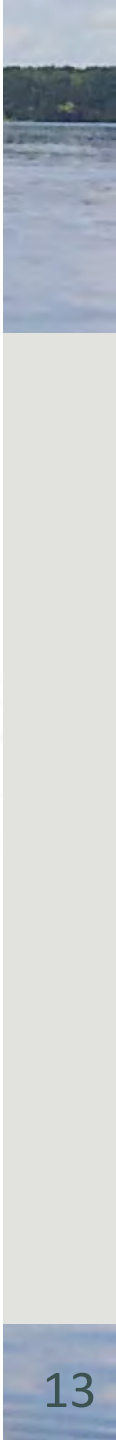
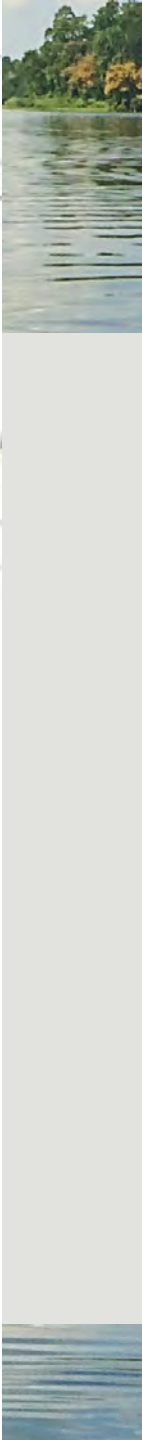
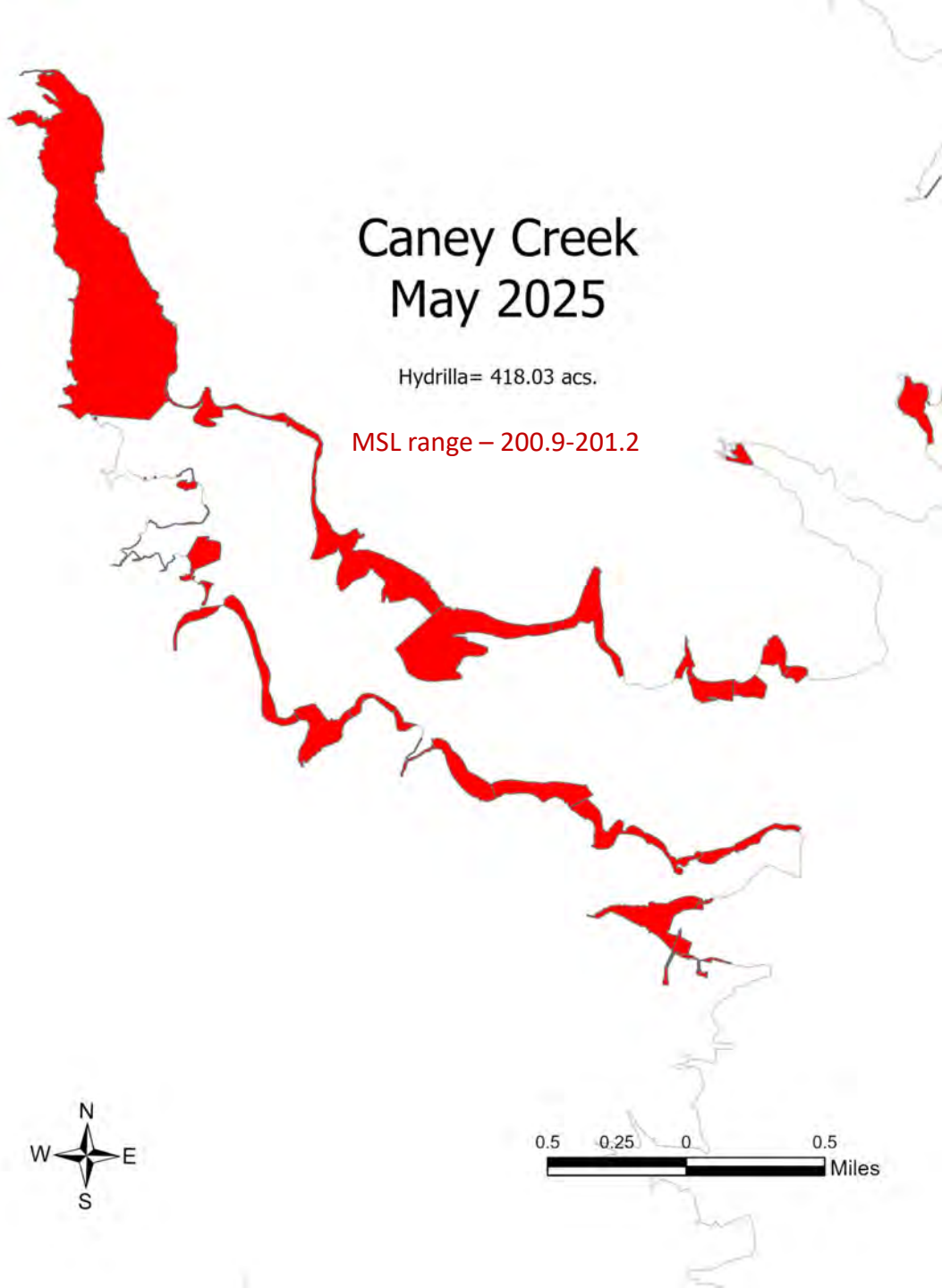
MSL=201.1 ft.

Hydrilla=165.00 acs.



An aerial photograph of a large, dark blue lake with numerous small, tree-covered islands. The water is dotted with large patches of green lily pads. The surrounding land is covered in dense, green forest. The word "Cagle" is written in white text in the upper right corner.

Cagle





Caney Creek

Panicum

Hydrilla

An aerial photograph of a creek system. The top left shows a dense forest of green trees. A bright green, mossy or algal growth runs along the shoreline between the forest and the water. The water is dark blue-grey. Two white arrows originate from the word 'Hydrilla' on the right side of the image, pointing to two distinct areas of dark, dense vegetation in the water. The text 'Caney Creek' is written in white in the upper right corner.

Caney Creek

Hydrilla

Bleier Cove


Salvinia



Bleier Cove

Salvinia

Coontail

An aerial photograph of Bleier Cove, a large body of water with a dark green, somewhat murky appearance. The water is surrounded by a lush green lawn and dense trees. In the upper right, there are several large, multi-story buildings with brown roofs, likely a resort or clubhouse. A paved road and a parking lot are visible near the buildings. In the center of the image, there are two white arrows pointing to specific areas of the water. The top arrow is labeled 'Salvinia' and points to a patch of bright green, floating aquatic plants. The bottom arrow is labeled 'Coontail' and points to a patch of darker green, submerged aquatic plants. The water is bordered by a wooden dock and a paved area on the right side.

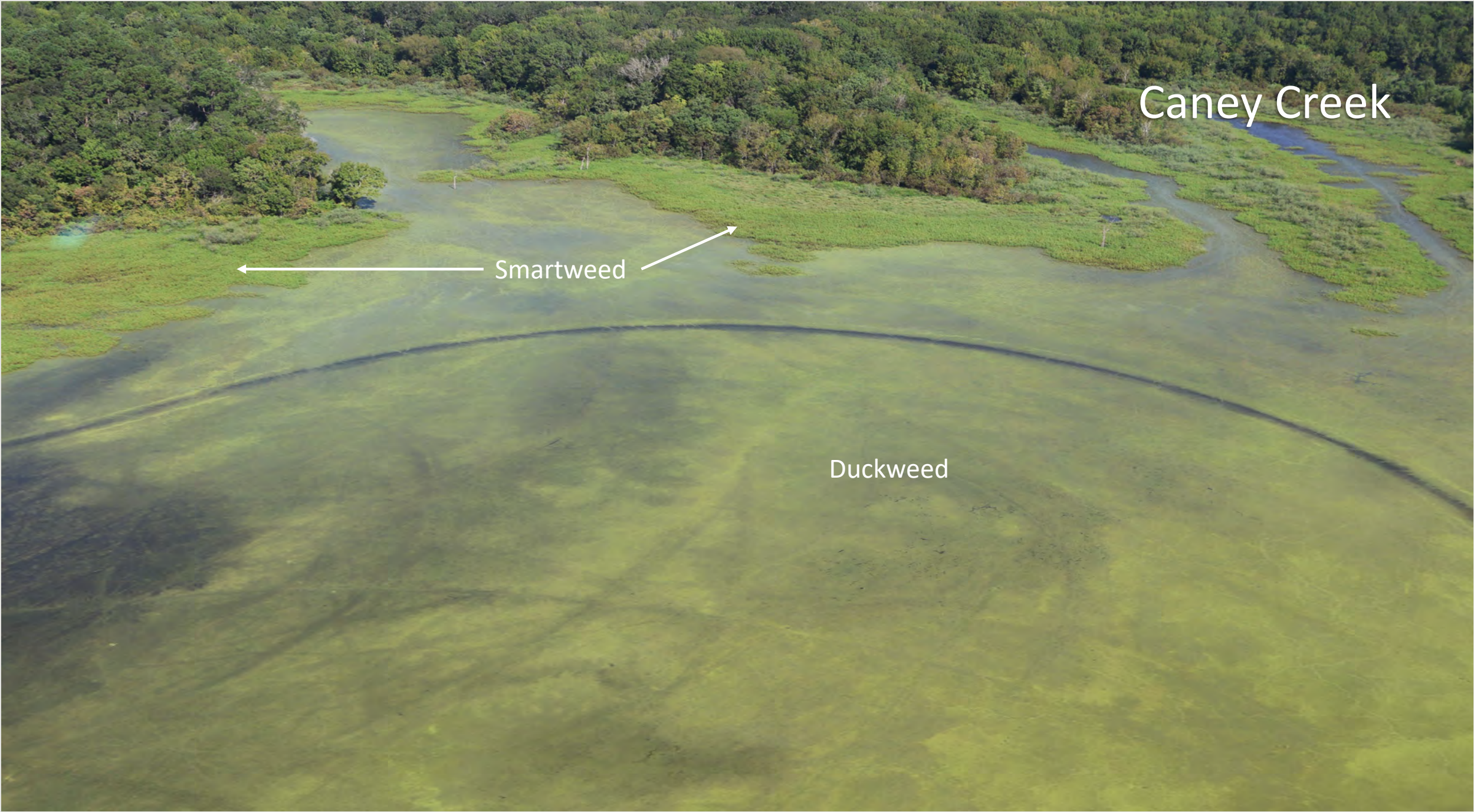
An aerial photograph of a creek. The water is dark and occupies the lower half of the frame. A grassy bank runs along the upper edge of the water, with a dense forest of green trees and shrubs behind it. The text "Caney Creek" is overlaid in white in the upper right corner.

Caney Creek

Caney Creek

Smartweed

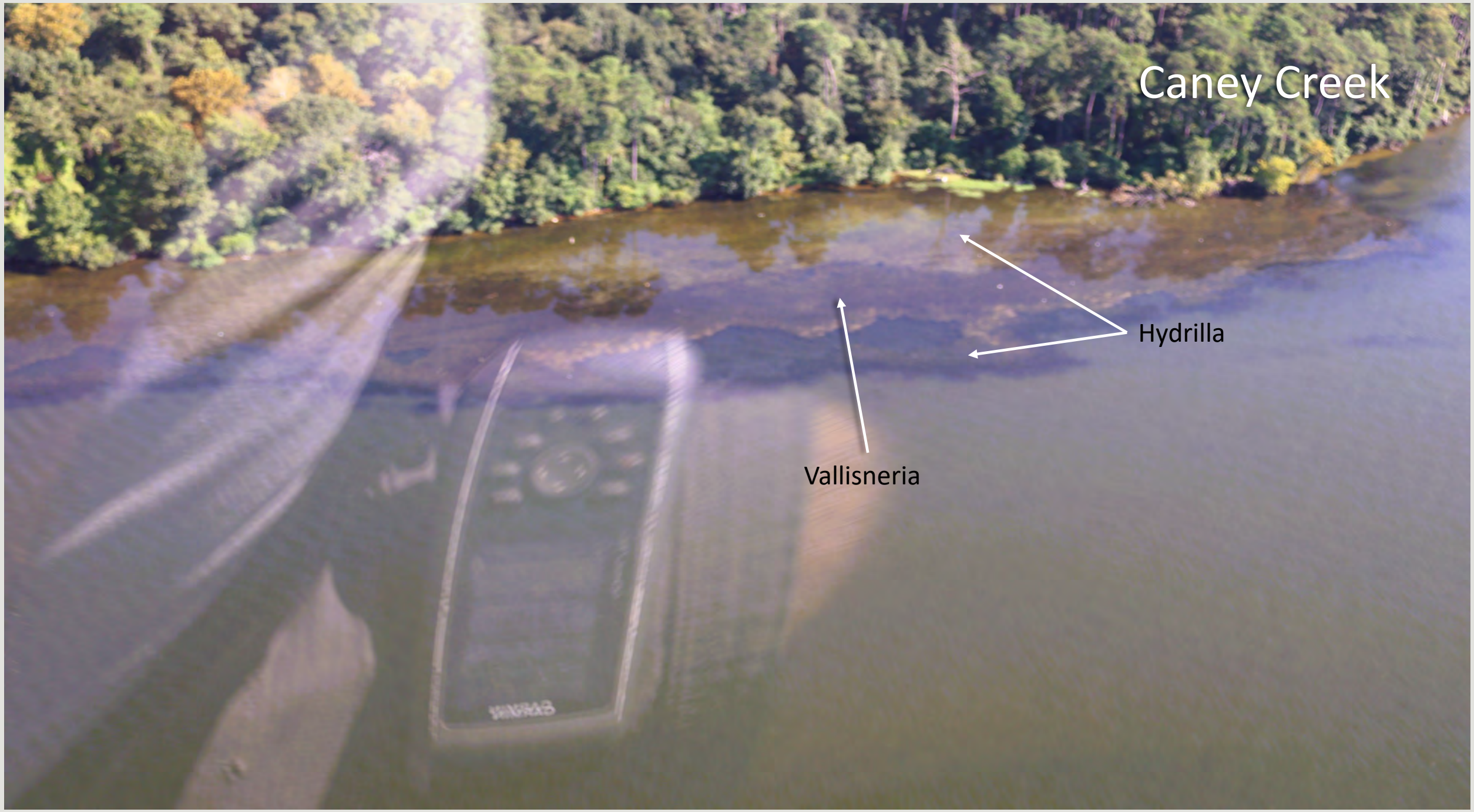
Duckweed



Caney Creek

Hydrilla

Vallisneria

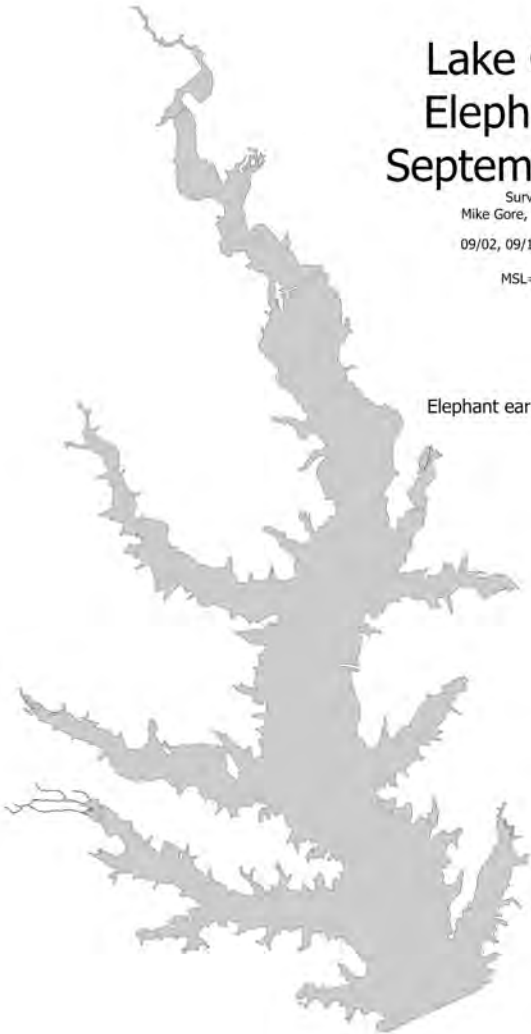


Other Invasive Species

Lake Conroe Elephant ear September 2025

Surveyed by;
Mike Gore, Brandon Murray
09/02, 09/17, 09/21, 09/28
MSL=201.1 ft.

Elephant ear=0.33 acs.



Lake Conroe Floating heart September 2025

Surveyed by;
Mike Gore, Brandon Murray
09/02, 09/17, 09/21, 09/28
MSL=201.1 ft.

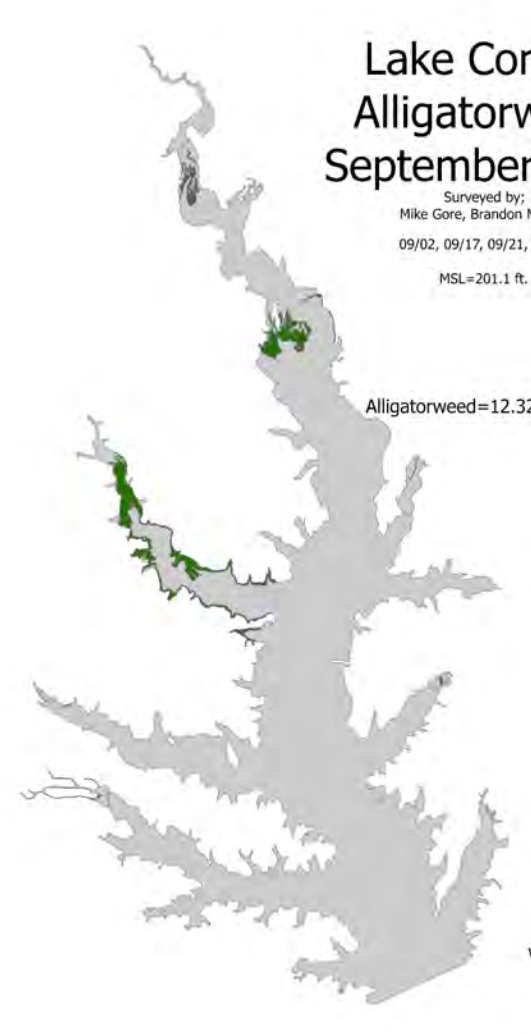
Floating heart=0.33 acs.



Lake Conroe Alligatorweed September 2025

Surveyed by;
Mike Gore, Brandon Murray
09/02, 09/17, 09/21, 09/28
MSL=201.1 ft.

Alligatorweed=12.32 acs.



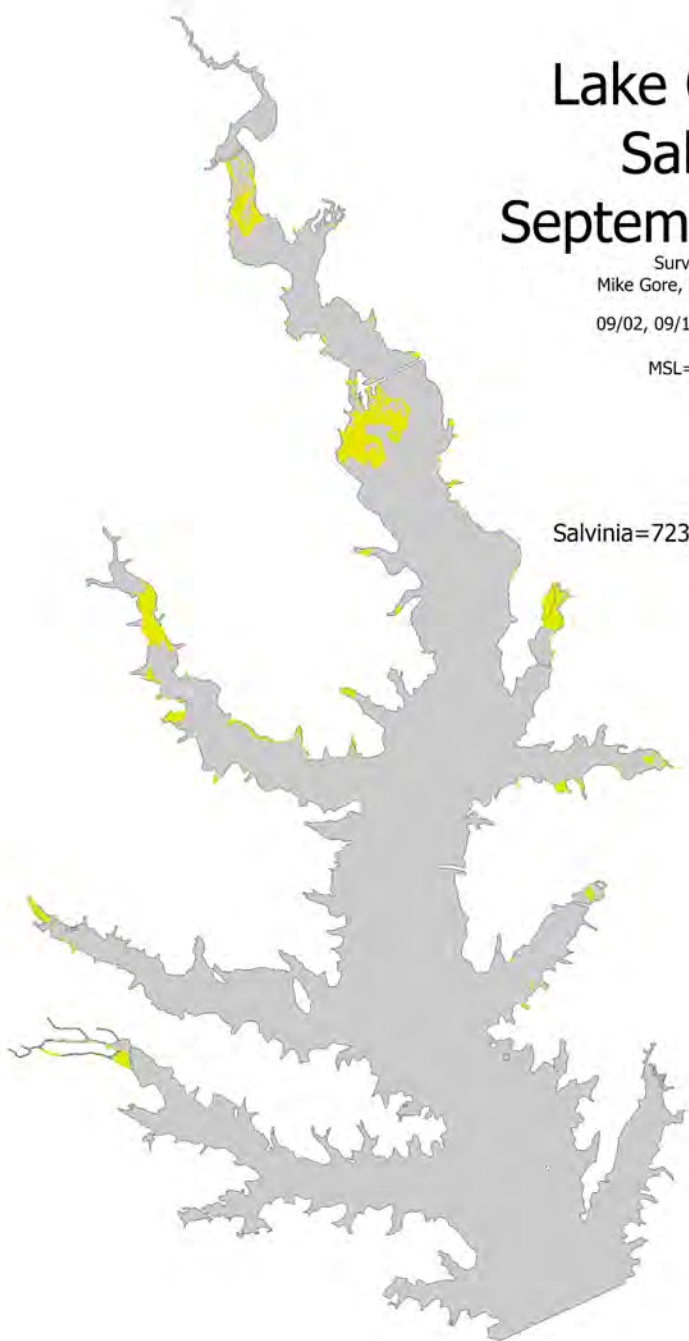
Lake Conroe Salvinia September 2025

Surveyed by;
Mike Gore, Brandon Murray

09/02, 09/17, 09/21, 09/28

MSL=201.1 ft.

Salvinia=723.23 acs.



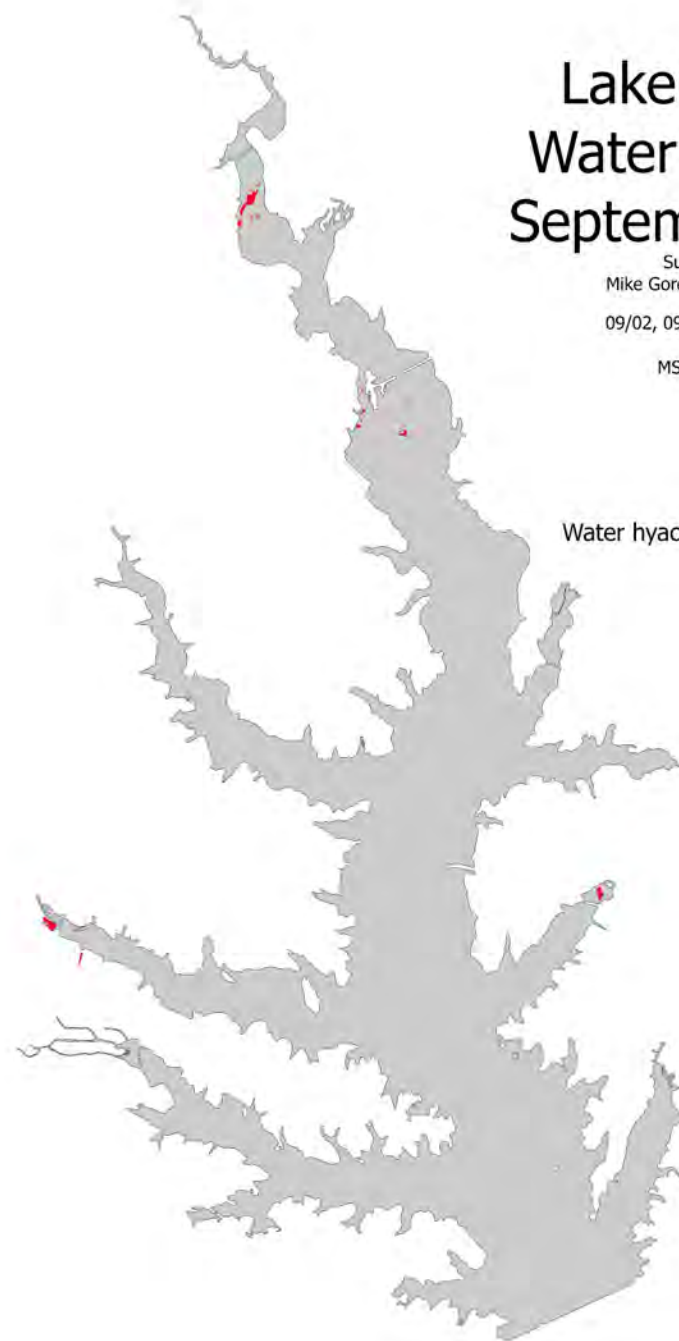
Lake Conroe Water hyacinth September 2025

Surveyed by;
Mike Gore, Brandon Murray

09/02, 09/17, 09/21, 09/28

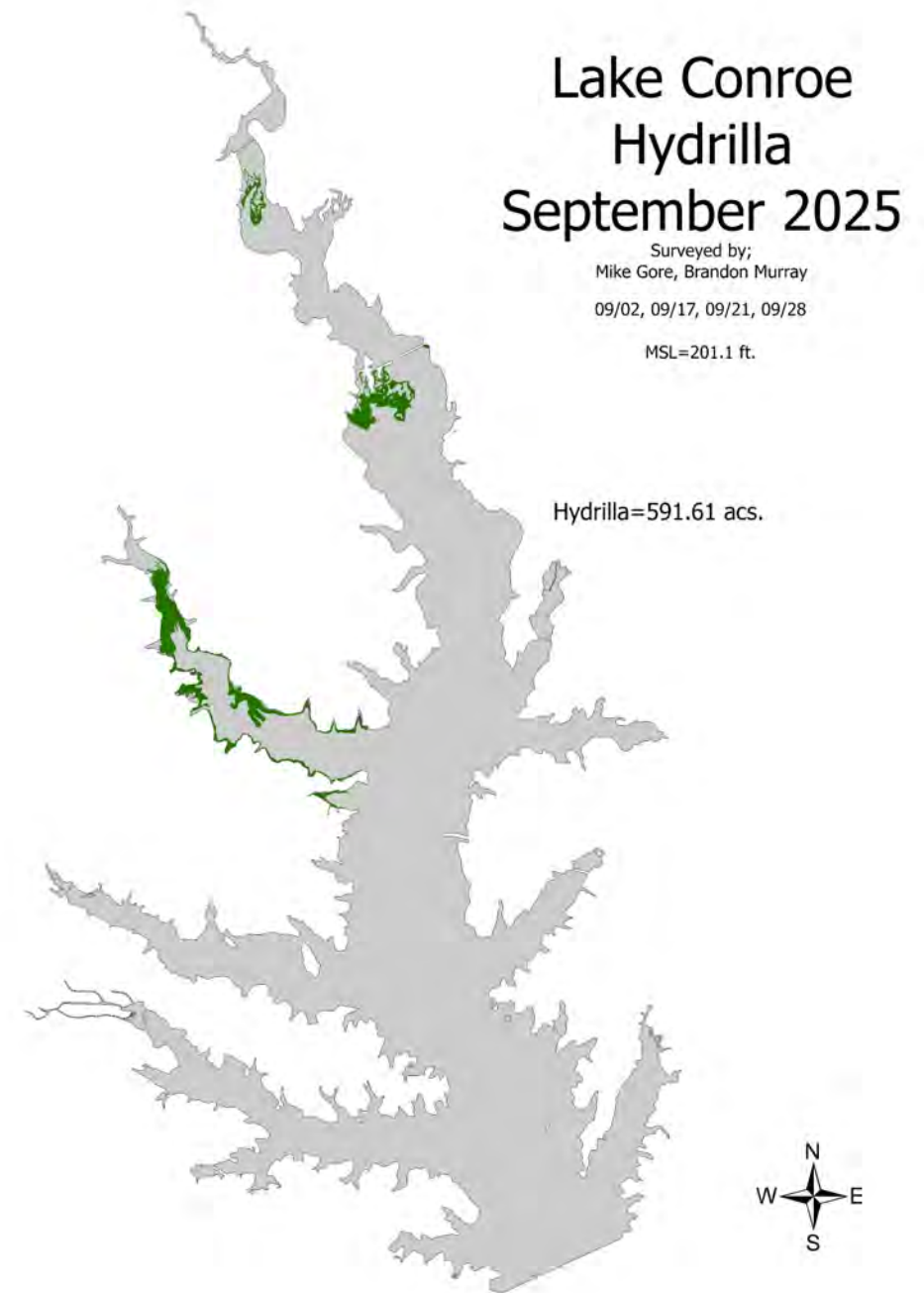
MSL=201.1 ft.

Water hyacinth= 47.21 acs.



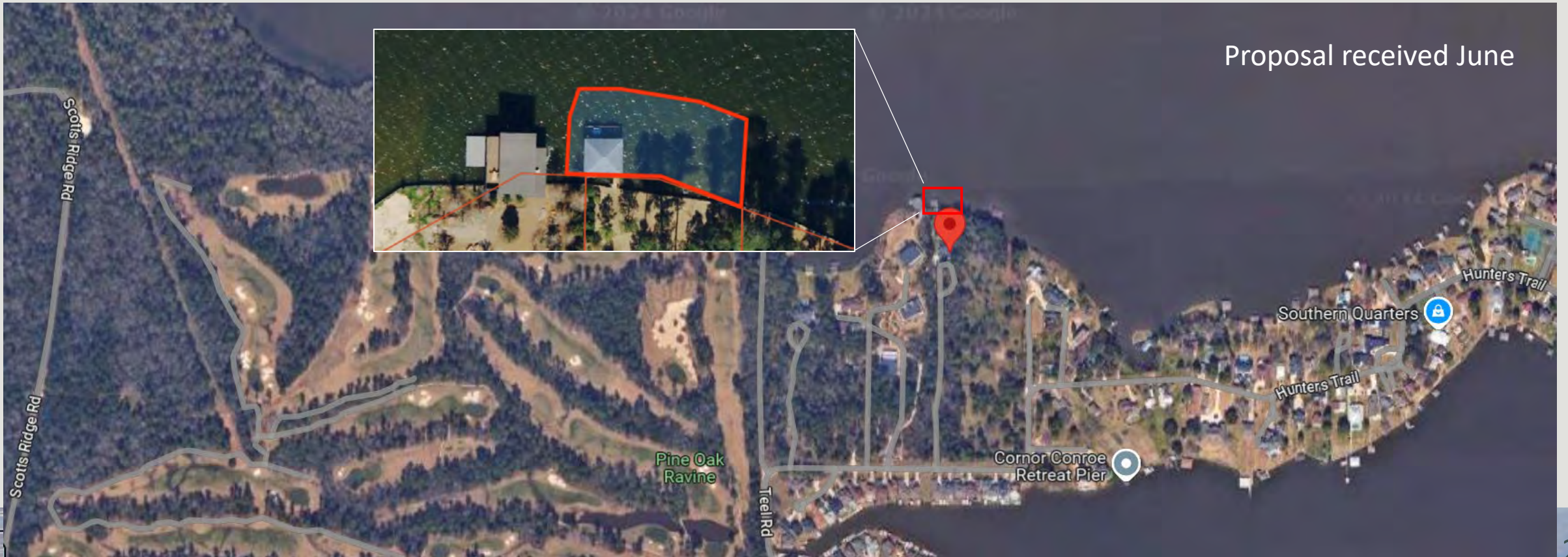
Fall 2025 Hydrilla

- 05.20.24 – 347.3 acres
- 08.28.24 – 322.80 acres
- 05.09-06.10.25 – 505.78 acres
- 09.02.25 – 591.61 acres



Homeowner Treatment Proposals

- Pristine Pond Solutions, 1/4 acre (3ft avg. depth) treatment



Legend

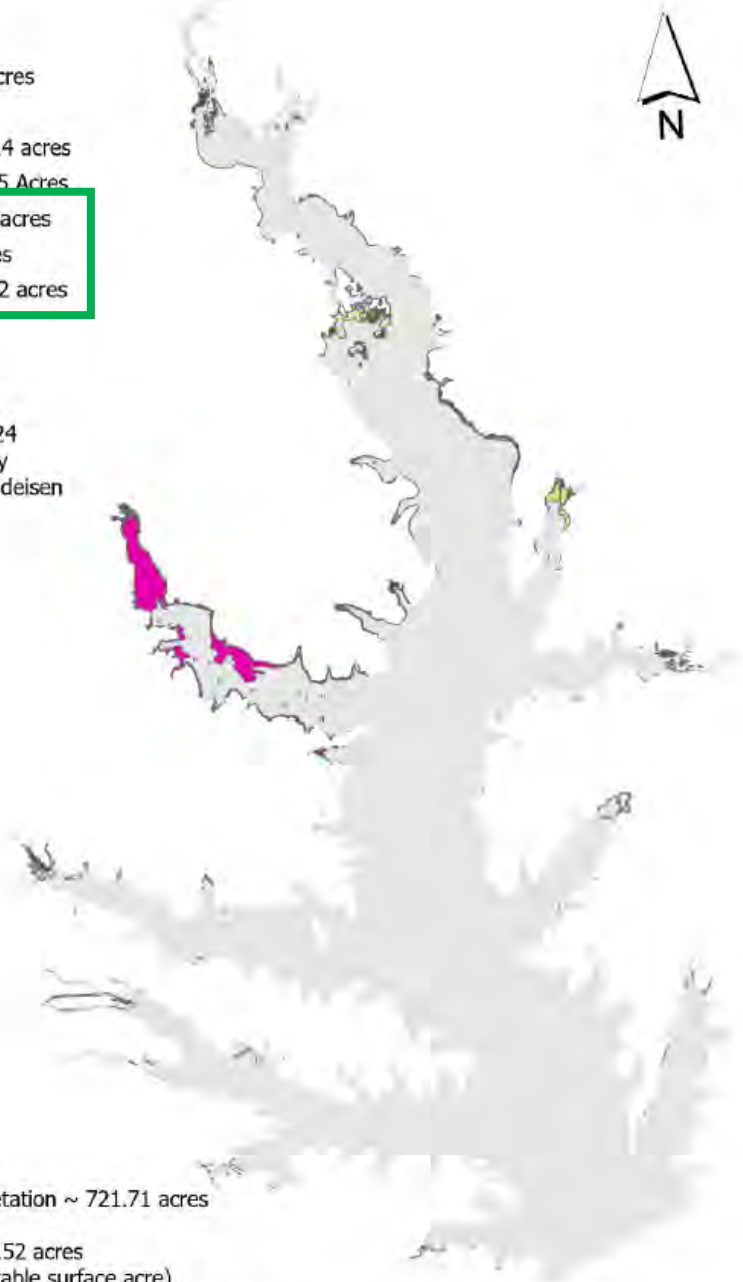
- Lake Conroe - 19,816.67 Acres
- Hydrilla ~ 322.80 acres
- Non-native Emergent ~ 0.14 acres
- Non-native Floating ~ 29.45 Acres
- Native Emergent ~ 213.18 acres**
- Native Floating ~ 0.41 Acres**
- Native Submersed ~ 155.72 acres**

Survey Dates

Aerial August 28, 2024
Survey conducted by
Dylan Kwak and John Findeisen

Triploid Grass Carp ~ 1,675 fish
Total Native and Non-native vegetation ~ 721.71 acres
Percent Covered ~ 3.6%
Total Palatable Vegetation ~ 478.52 acres
(3.5 Triploid Grass Carp per palatable surface acre)
Native Palatable ~ 155.72 acres (10.8 fish/vegetative acre)
Non-native Palatable (Hydrilla) ~ 322.80 acres (5.2 fish/vegetative acre)

0 1 2 4 Miles



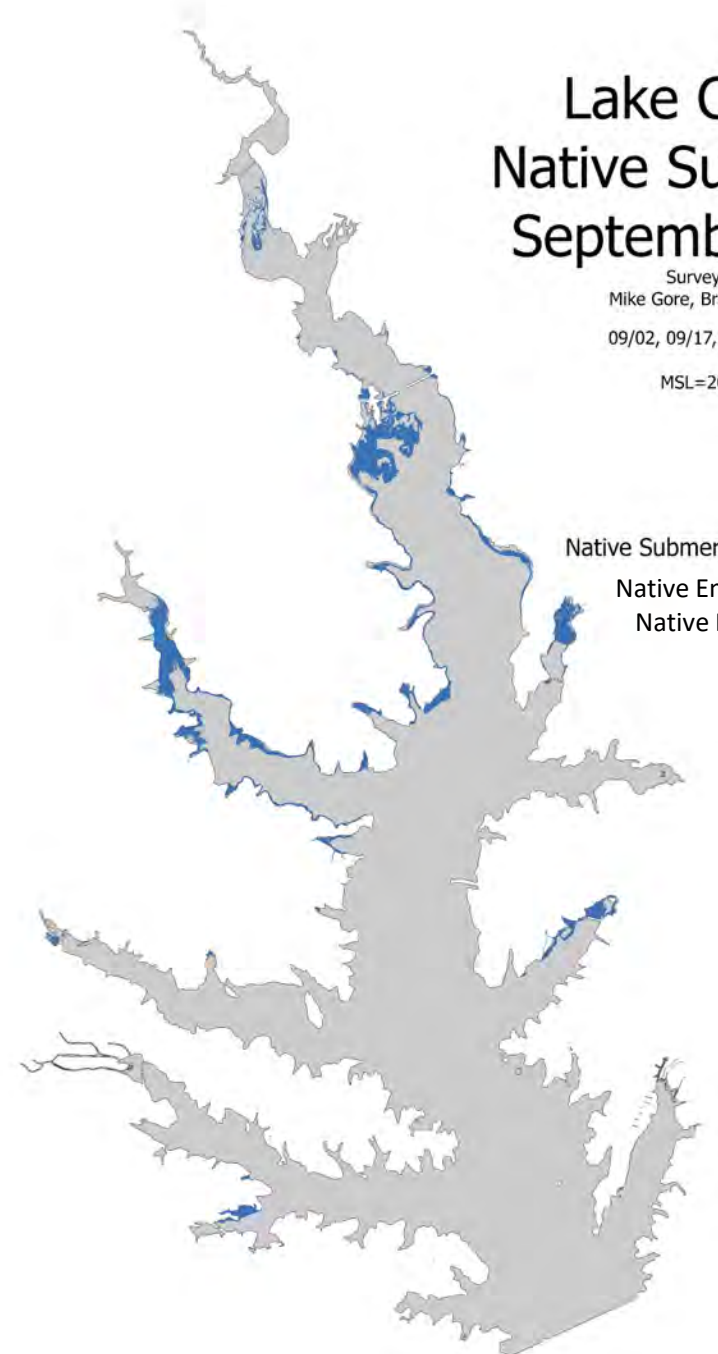
Lake Conroe Native Submersed September 2025

Surveyed by;
Mike Gore, Brandon Murray

09/02, 09/17, 09/21, 09/28

MSL=201.1 ft.

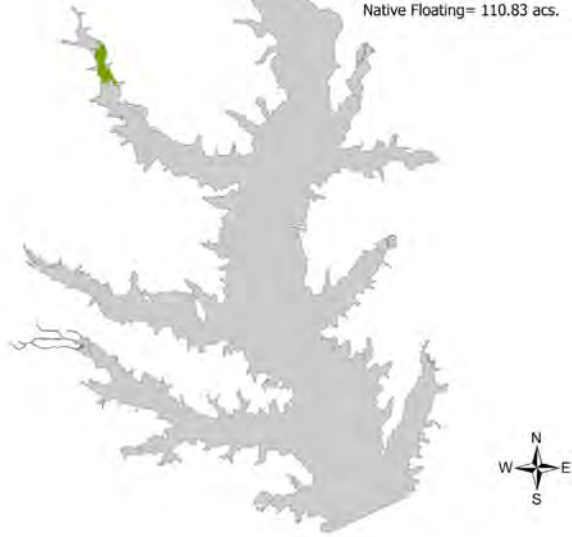
Native Submersed=1,077.33 acs.
Native Emergent – 361.58
Native Floating – 110.83



Lake Conroe Native Floating September 2025

Surveyed by:
Mike Gore, Brandon Murray
09/02, 09/17, 09/21, 09/28
MSL=201.1 ft.

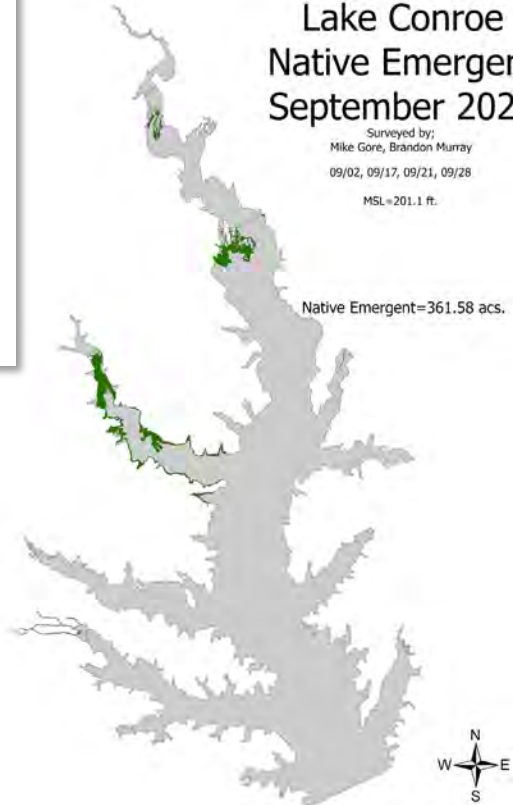
Native Floating= 110.83 acs.



Lake Conroe Native Emergent September 2025

Surveyed by:
Mike Gore, Brandon Murray
09/02, 09/17, 09/21, 09/28
MSL=201.1 ft.

Native Emergent=361.58 acs.



Lake Conroe Native Submersed September 2025

Surveyed by:
Mike Gore, Brandon Murray
09/02, 09/17, 09/21, 09/28
MSL=201.1 ft.

Native Submersed=1,077.33 acs.

~ 60% coontail
=
~ 431 acres
w/o coontail



Lake Paula



West Shoreline

Cutgrass





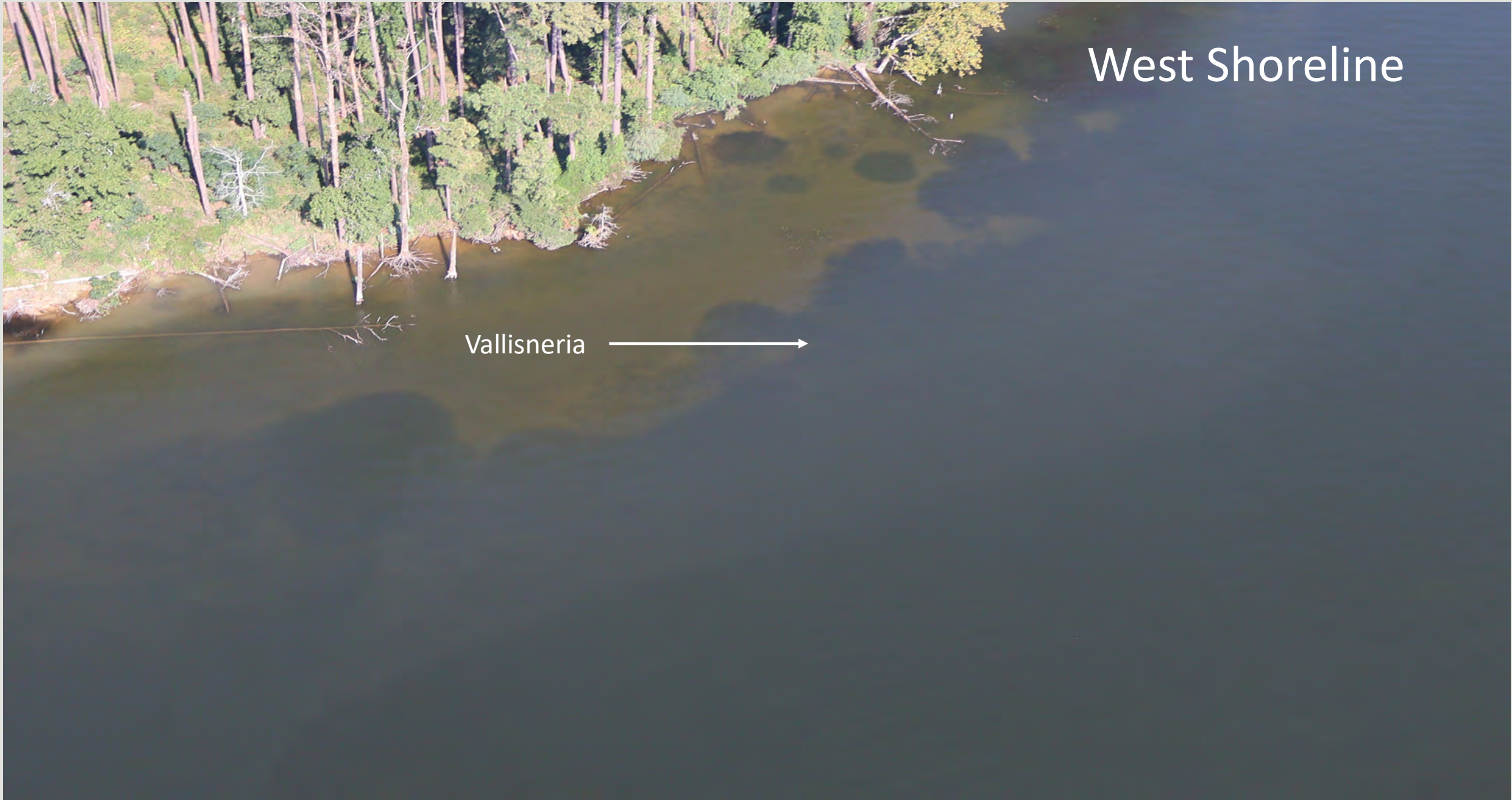
West Shoreline

American pondweed

Vallisneria

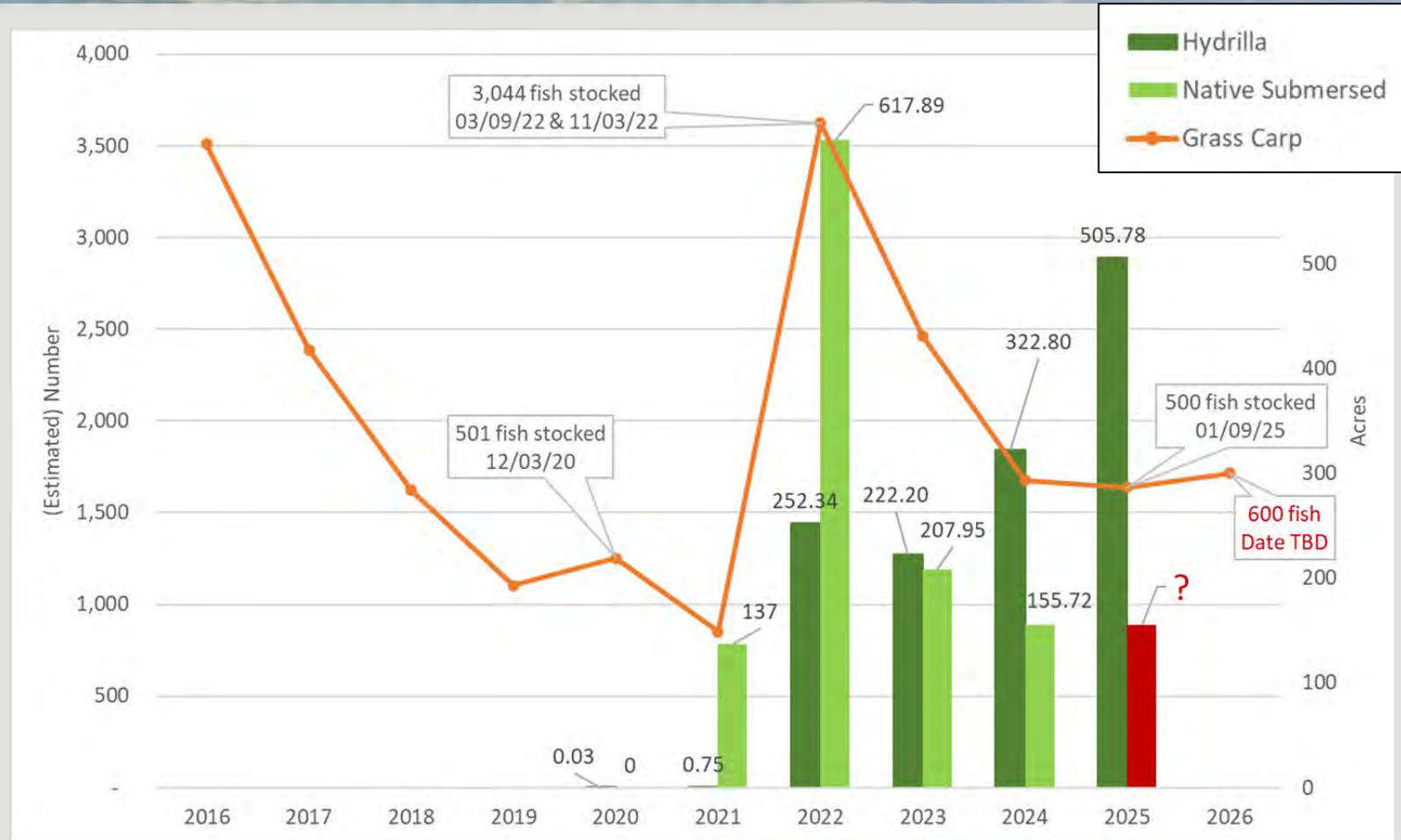
West Shoreline

Vallisneria 

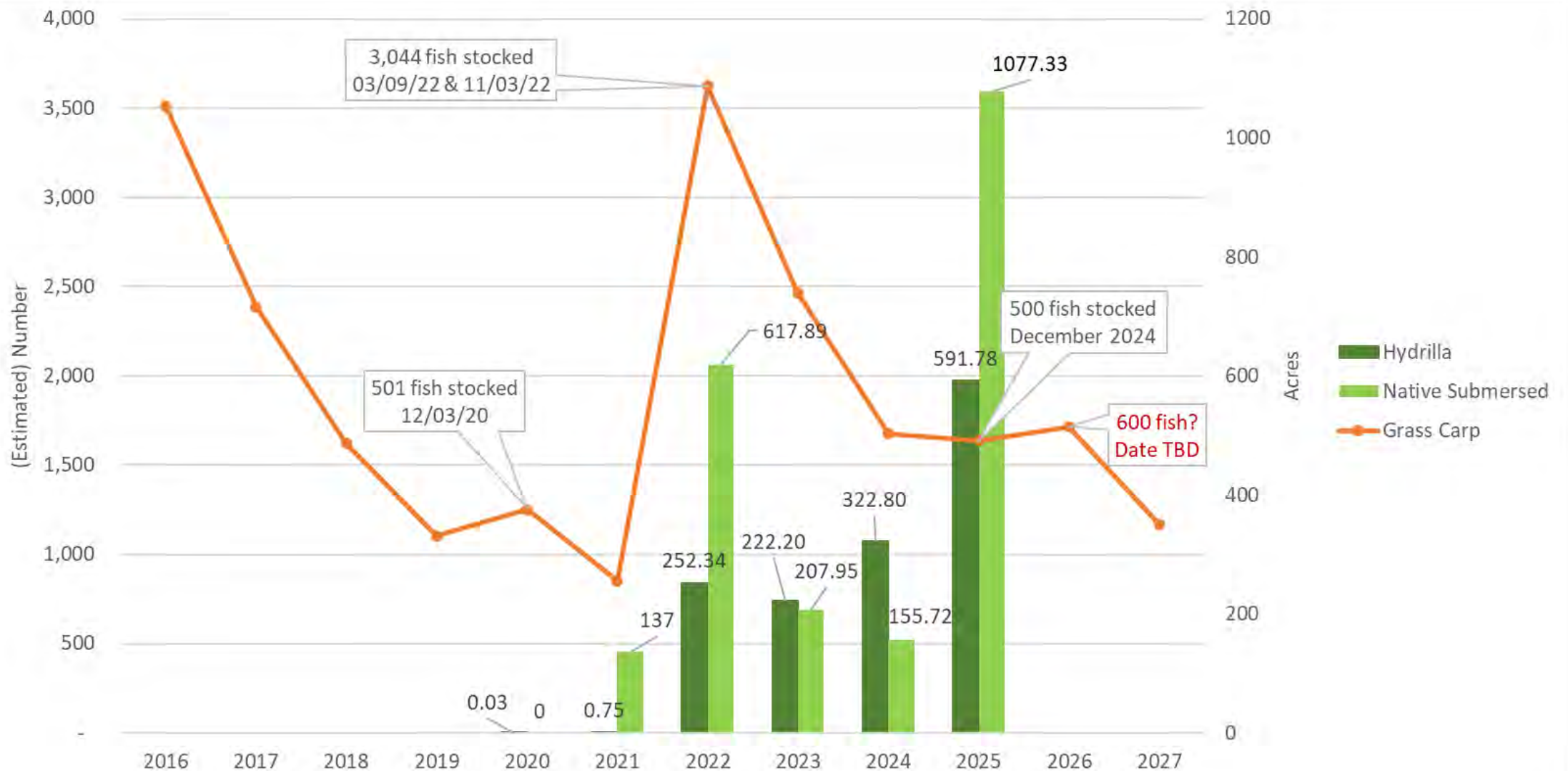


Potential Recommendations

- If 155 acres native and no fish stocked → 2.48 fish/p.a.
- If 155 acres native and bump fish another 600 → 3.39 fish/p.a.
- If 300 acres native and no fish stocked → 2.03 fish/p.a.
- If 300 acres native and stock another 600 fish → 2.78 fish/p.a.



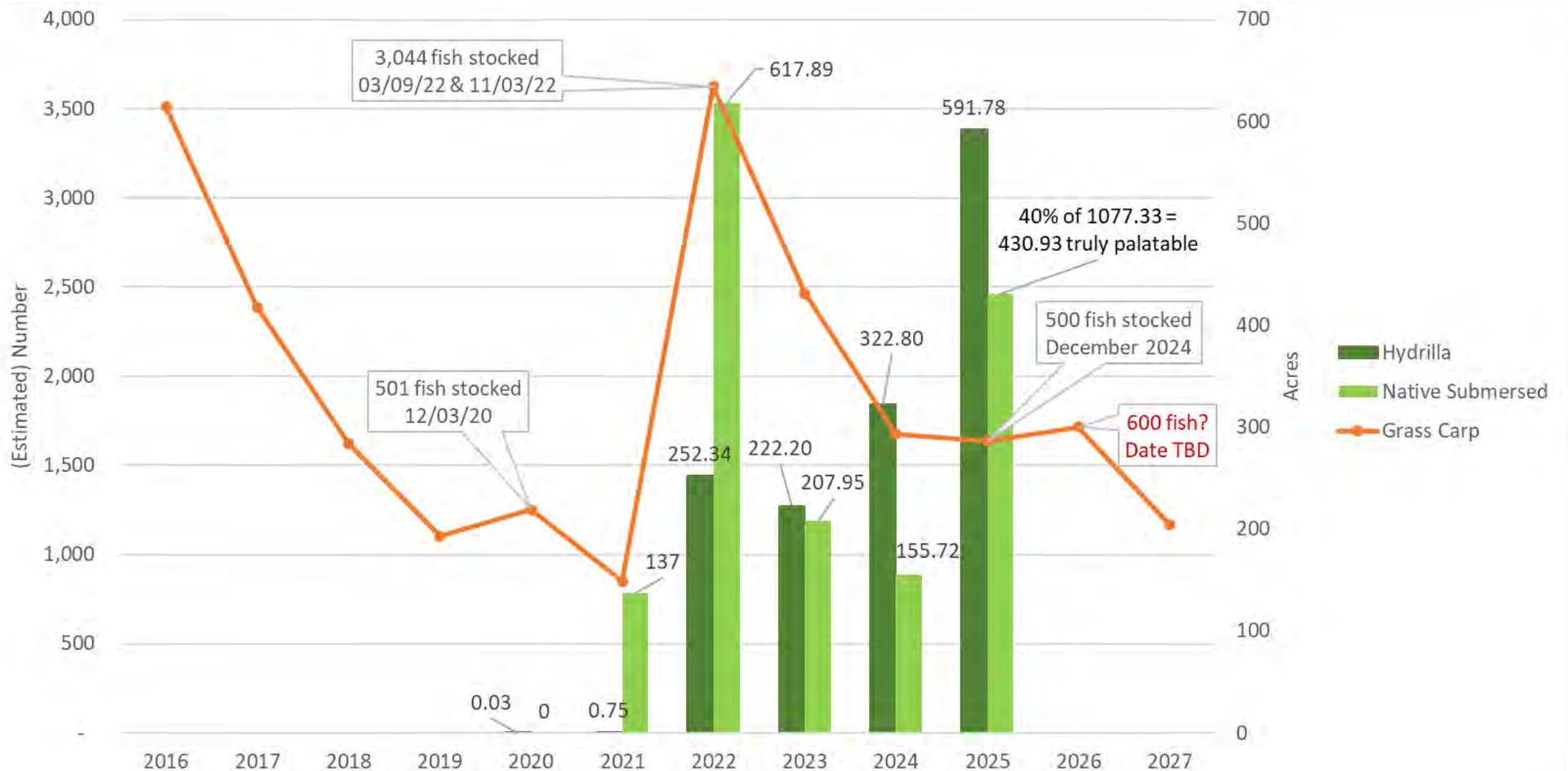
2025 Grass Carp & Vegetation



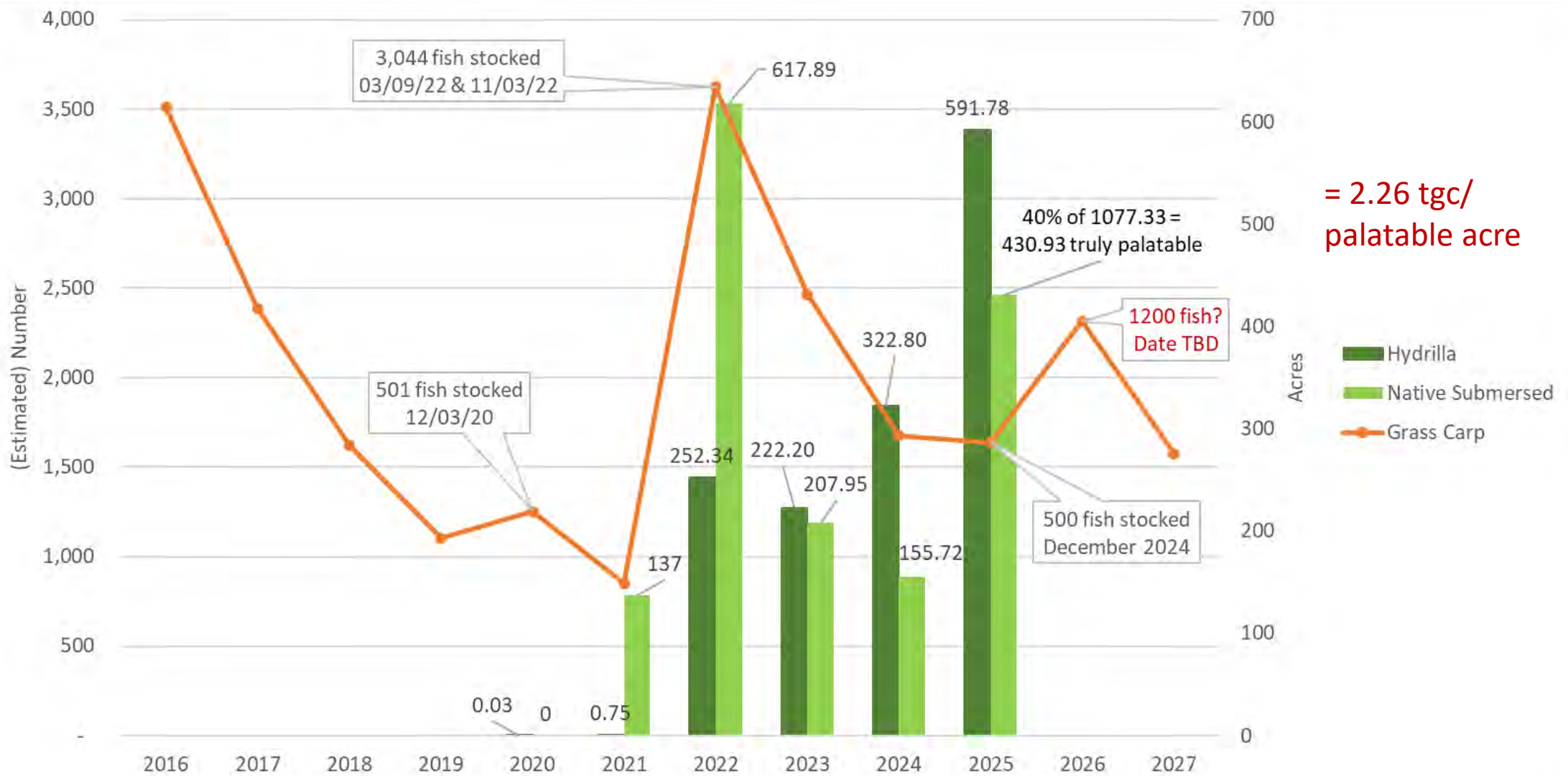
Lake Paula

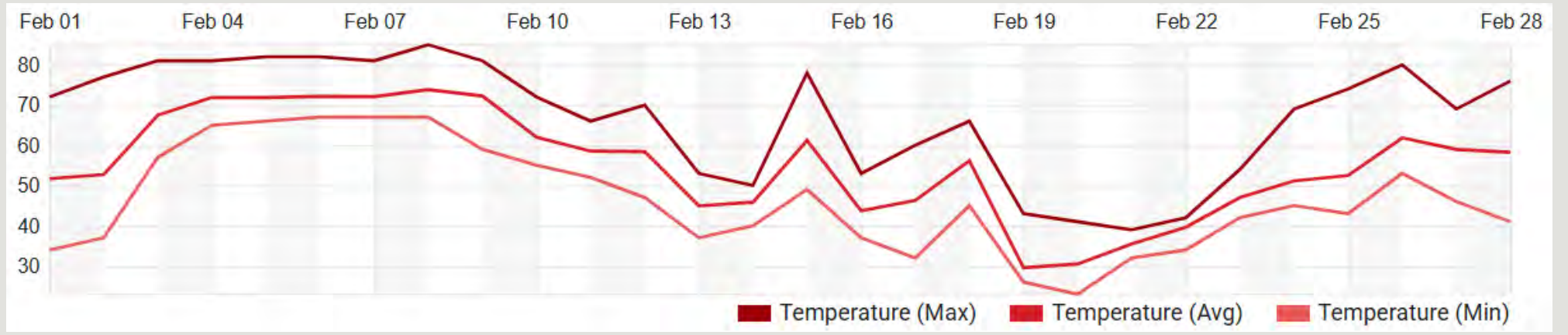
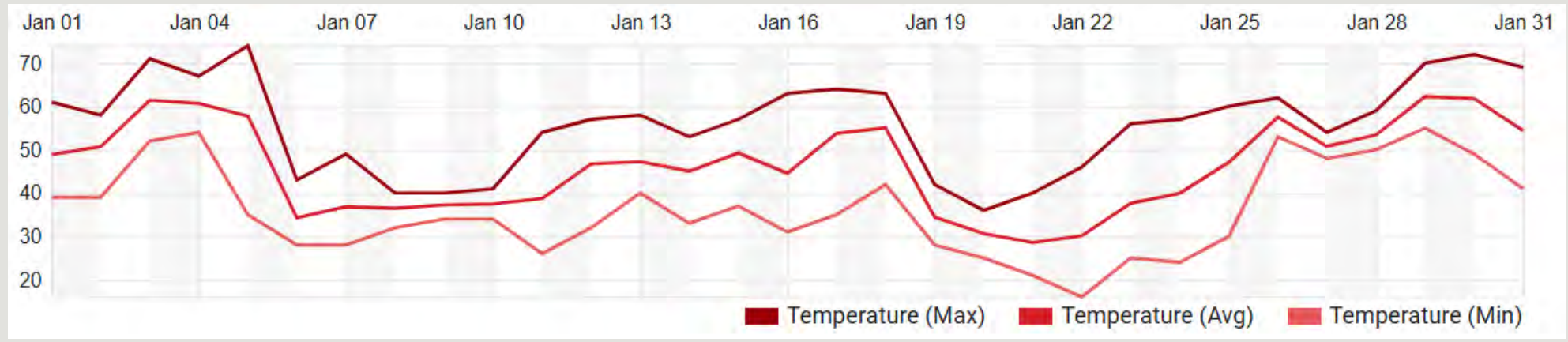
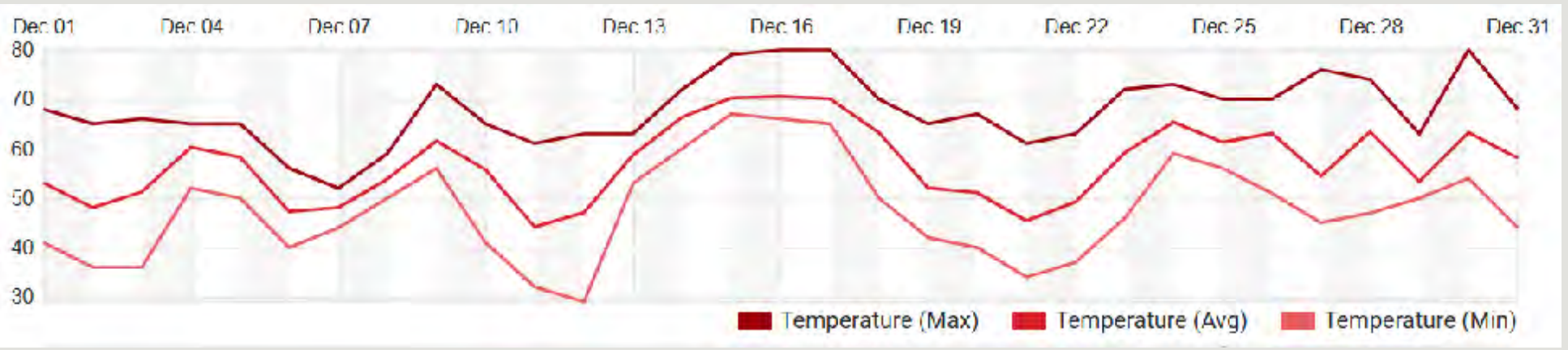


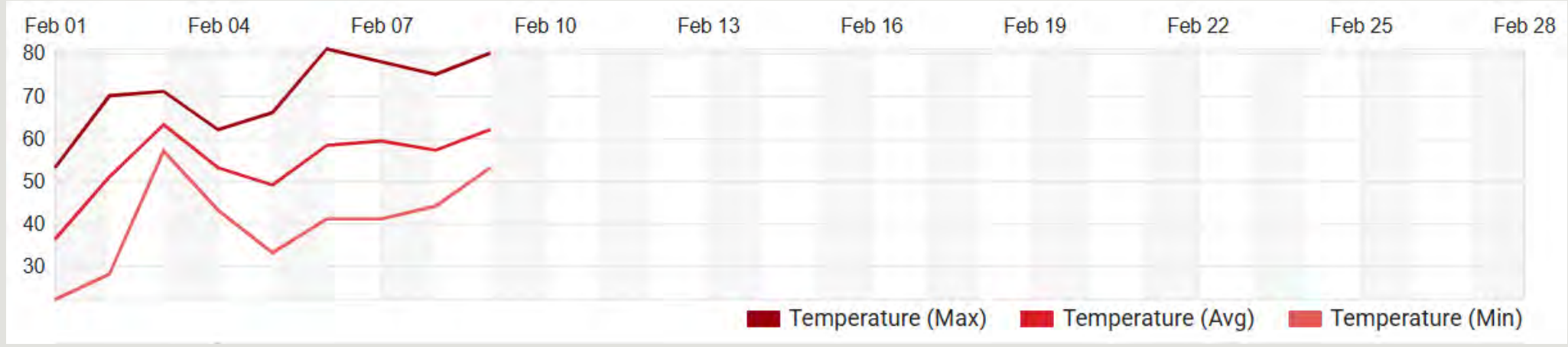
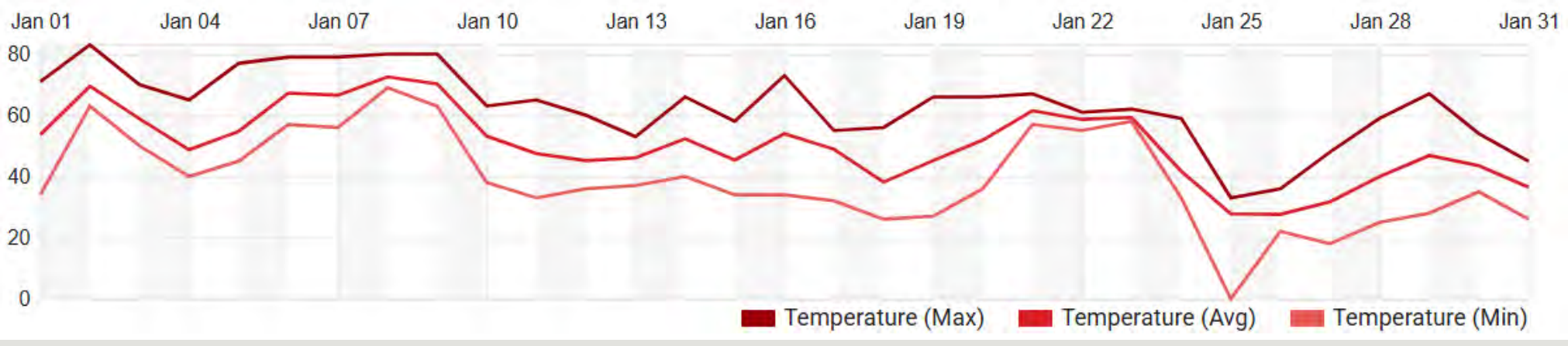
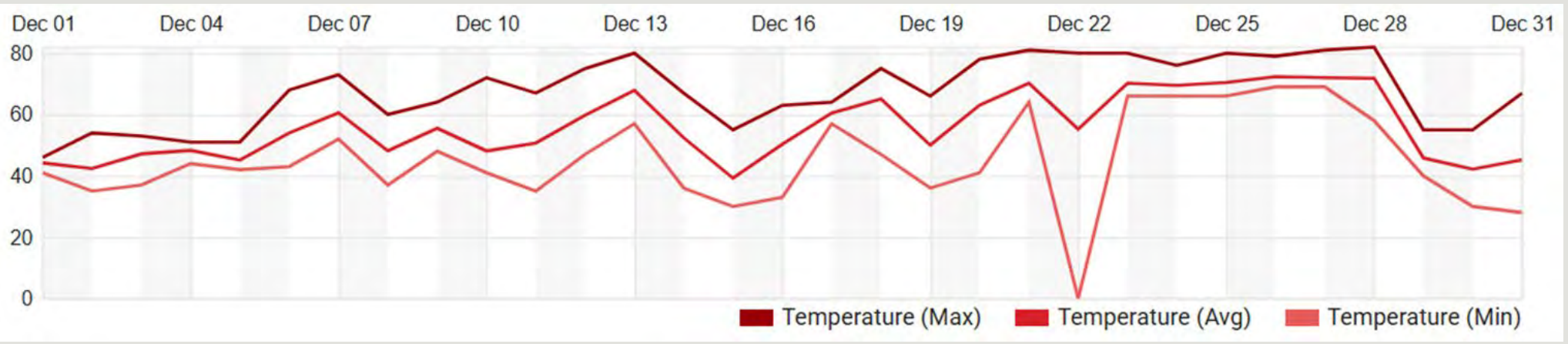
2025 Grass Carp & Vegetation



2025 Grass Carp & Vegetation









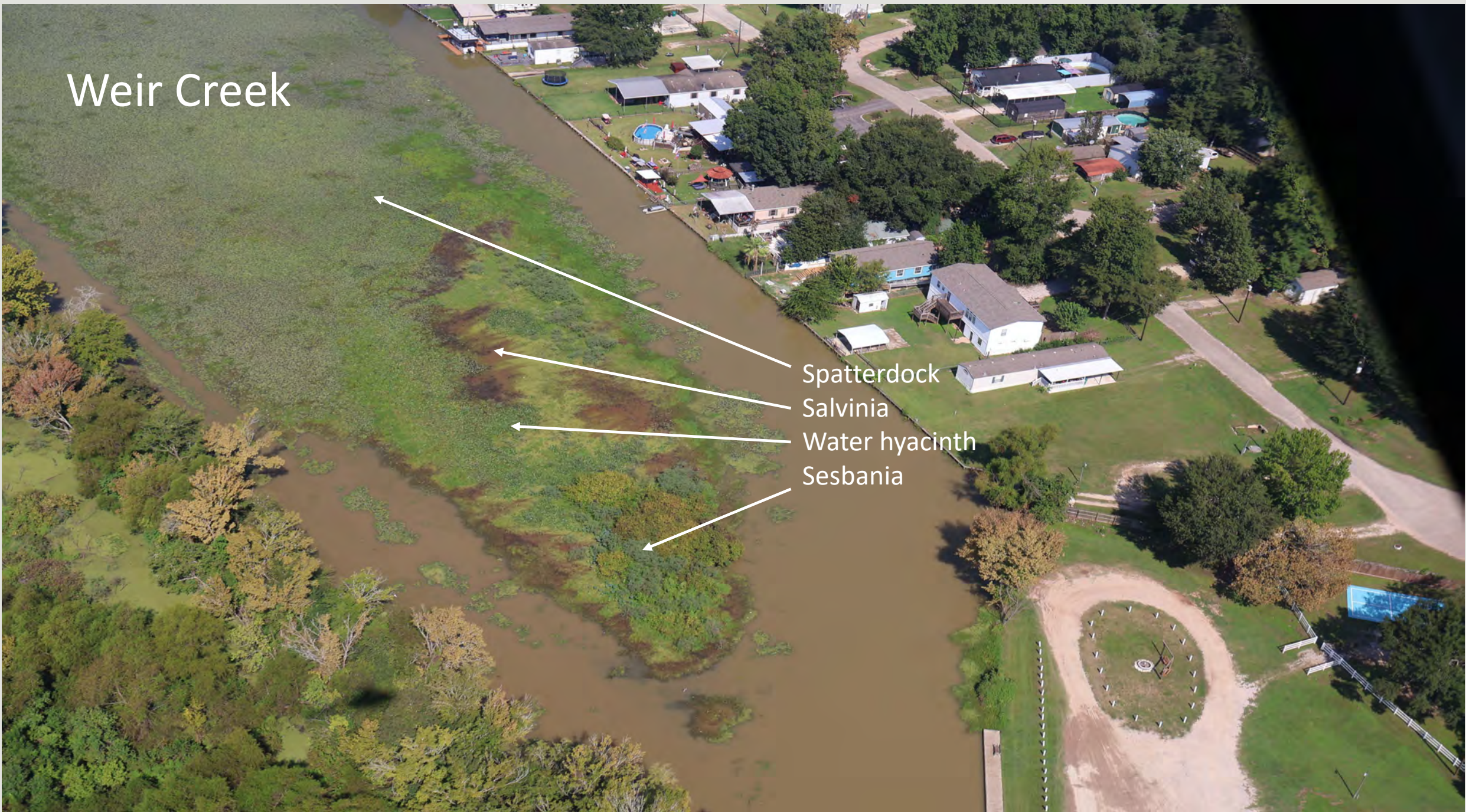
Questions, Comments, Complaints?

Hostetter Creek



Weir Creek

- Spatterdock
- Salvinia
- Water hyacinth
- Sesbania

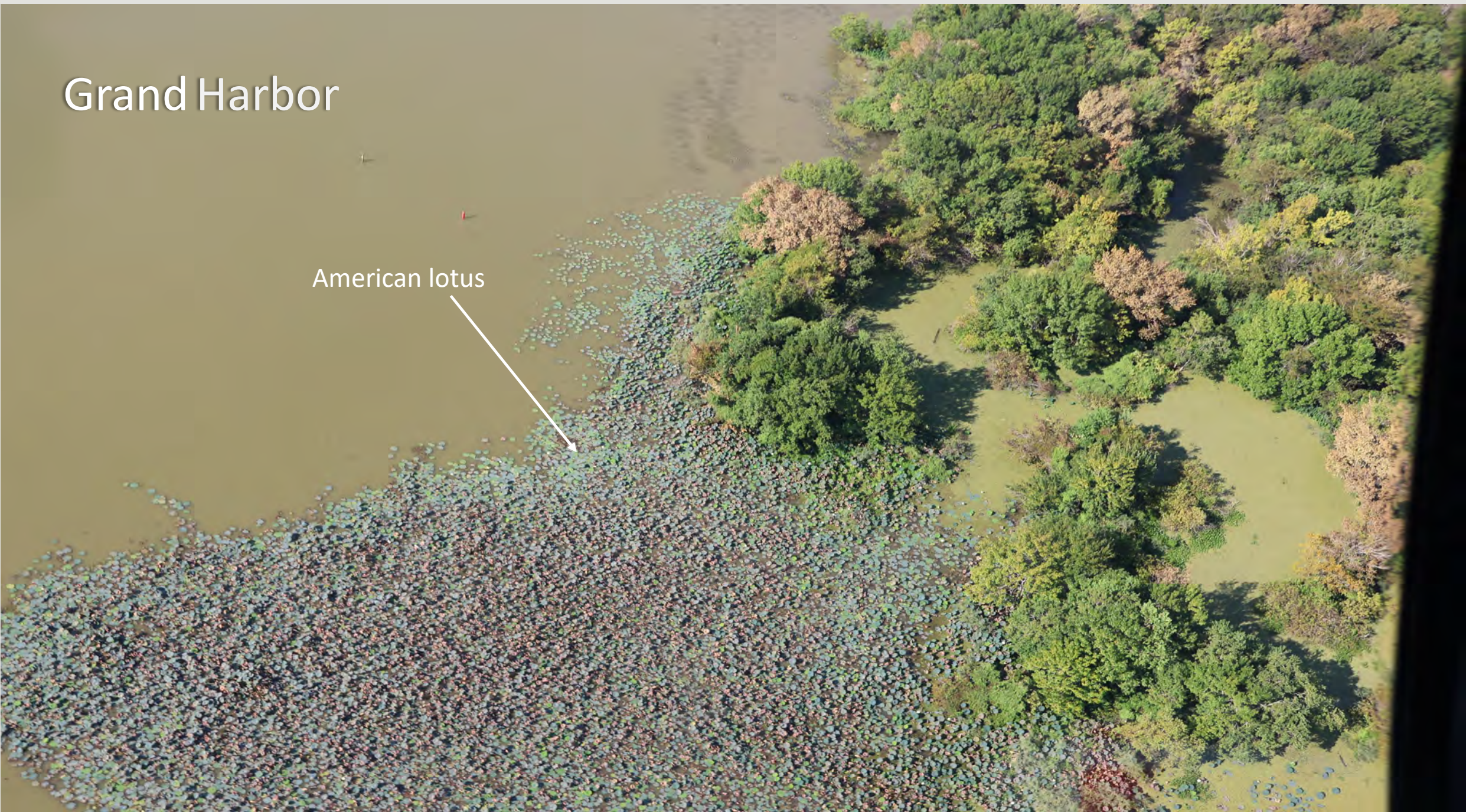


Lewis Creek



Grand Harbor

American lotus



An aerial photograph of a creek system. The main channel of the creek is filled with numerous lily pads, appearing as a dense pattern of green circles on the dark water. To the left of the main channel, there is a large, dense area of green vegetation, possibly a wetland or marsh. To the right, the creek flows through a wooded area with various trees and shrubs. The water in the upper right section of the image is a murky, brownish-green color. The overall scene is a natural, somewhat overgrown waterway.

Little Lake Creek

Little Lake Creek

